

## Product datasheet for **TA302468**

### DOK5 Goat Polyclonal Antibody

#### Product data:

Product Type:	Primary Antibodies
Applications:	IHC, PEP-ELISA
Recommended Dilution:	ELISA: 1:16,000. WB: 1-3µg/ml. IHC: 1-2µg/ml.
Reactivity:	Human (Expected from sequence similarity: Mouse, Rat, Dog, Pig, Cow)
Host:	Goat
Isotype:	IgG
Clonality:	Polyclonal
Immunogen:	Peptide with sequence CLHRTETFPAYRSEH, from the C Terminus of the protein sequence according to NP_060901; NP_808874.
Formulation:	Supplied at 0.5 mg/ml in Tris saline, 0.02% sodium azide, pH7.3 with 0.5% bovine serum albumin.
Concentration:	lot specific
Purification:	Purified from goat serum by ammonium sulphate precipitation followed by antigen affinity chromatography using the immunizing peptide. Supplied at 0.5 mg/ml in Tris saline, 0.02% sodium azide, pH7.3 with 0.5% bovine serum albumin.
Conjugation:	Unconjugated
Storage:	Store at -20°C as received.
Stability:	Stable for 12 months from date of receipt.
Predicted Protein Size:	39088 Da
Gene Name:	docking protein 5
Database Link:	<a href="#">NP_060901</a> <a href="#">Entrez Gene 76829 Mouse</a> <a href="#">Entrez Gene 502694 Rat</a> <a href="#">Entrez Gene 485936 Dog</a> <a href="#">Entrez Gene 55816 Human</a> <a href="#">Q9P104</a>



[View online »](#)

**Background:**

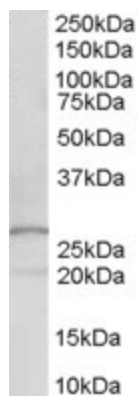
The protein encoded by this gene is a member of the DOK family of membrane proteins, which are adapter proteins involved in signal transduction. The encoded protein interacts with phosphorylated receptor tyrosine kinases to mediate neurite outgrowth and activation of the MAP kinase pathway. In contrast to other DOK family proteins, this protein does not interact with RASGAP. [provided by RefSeq]. COMPLETENESS: complete on the 3' end.

**Synonyms:**

C20orf180; IRS-6; IRS6

**Protein Families:**

Druggable Genome

**Product images:**

TA302468 (0.1ug/ml) staining of human kidney lysate (35ug protein in RIPA buffer). Primary incubation was 1 hour. Detected by chemiluminescence.