

Product datasheet for **TA302467**

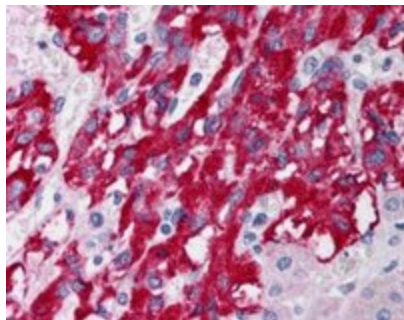
DLC1 Goat Polyclonal Antibody

Product data:

Product Type:	Primary Antibodies
Applications:	IHC
Recommended Dilution:	ELISA: 1:32,000. WB: 5µg/ml.
Reactivity:	Human (Expected from sequence similarity: Mouse, Pig)
Host:	Goat
Isotype:	IgG
Clonality:	Polyclonal
Immunogen:	Peptide with sequence SVAIRKRSWEEHC, from the N Terminus of the protein sequence according to NP_872584.1; NP_079043.2.
Formulation:	Supplied at 0.5 mg/ml in Tris saline, 0.02% sodium azide, pH7.3 with 0.5% bovine serum albumin.
Purification:	Purified from goat serum by ammonium sulphate precipitation followed by antigen affinity chromatography using the immunizing peptide. Supplied at 0.5 mg/ml in Tris saline, 0.02% sodium azide, pH7.3 with 0.5% bovine serum albumin.
Conjugation:	Unconjugated
Storage:	Store at -20°C as received.
Stability:	Stable for 12 months from date of receipt.
Predicted Protein Size:	126464 Da
Gene Name:	DLC1 Rho GTPase activating protein
Database Link:	NP_006085 Entrez Gene 50768 Mouse Entrez Gene 10395 Human Q96QB1
Background:	This gene is deleted in the primary tumor of hepatocellular carcinoma. It maps to 8p22-p21.3, a region frequently deleted in solid tumors. It is suggested that this gene is a candidate tumor suppressor gene for human liver cancer, as well as for prostate, lung, colorectal, and breast cancers. Alternative splicing at this locus results in several transcript variants encoding different isoforms. [provided by RefSeq]
Synonyms:	ARHGAP7; HP; p122-RhoGAP; STARD12



[View online »](#)

Product images:

TA302467 (5ug/ml) staining of paraffin embedded Human Adrenal Gland. Steamed antigen retrieval with citrate buffer pH 6, AP-staining.