

Product datasheet for **TA302459**

Cyclophilin A (PPIA) Goat Polyclonal Antibody

Product data:

| | |
|-------------------------|---|
| Product Type: | Primary Antibodies |
| Applications: | WB |
| Recommended Dilution: | ELISA: 1:8,000. WB: 1-3µg/ml. |
| Reactivity: | Human (Expected from sequence similarity: Mouse, Rat, Dog, Pig, Cow) |
| Host: | Goat |
| Isotype: | IgG |
| Clonality: | Polyclonal |
| Immunogen: | Peptide with sequence C-ERFGSRNGKTSKK, from the internal region of the protein sequence according to NP_066953.1; NP_982254.1; NP_982255.1. |
| Formulation: | Supplied at 0.5 mg/ml in Tris saline, 0.02% sodium azide, pH7.3 with 0.5% bovine serum albumin. |
| Purification: | Purified from goat serum by ammonium sulphate precipitation followed by antigen affinity chromatography using the immunizing peptide. Supplied at 0.5 mg/ml in Tris saline, 0.02% sodium azide, pH7.3 with 0.5% bovine serum albumin. |
| Conjugation: | Unconjugated |
| Storage: | Store at -20°C as received. |
| Stability: | Stable for 12 months from date of receipt. |
| Predicted Protein Size: | 21635 Da |
| Gene Name: | peptidylprolyl isomerase A |
| Database Link: | NP_066953 Entrez Gene 25518 Rat Entrez Gene 268373 Mouse Entrez Gene 608151 Dog Entrez Gene 5478 Human P62937 |



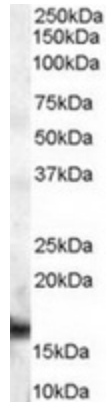
[View online »](#)

Background:

This gene encodes a member of the peptidyl-prolyl cis-trans isomerase (PPIase) family. PPIases catalyze the cis-trans isomerization of proline imidic peptide bonds in oligopeptides and accelerate the folding of proteins. The encoded protein is a cyclosporin binding-protein and may play a role in cyclosporin A-mediated immunosuppression. The protein can also interact with several HIV proteins, including p55 gag, Vpr, and capsid protein, and has been shown to be necessary for the formation of infectious HIV virions. Multiple pseudogenes that map to different chromosomes have been reported. [provided by RefSeq]

Synonyms:

CYPA; CYPH; HEL-S-69p

Product images:

TA302459 (2ug/ml) staining of human lymph node lysate (35ug protein in RIPA buffer). Primary incubation was 1 hour. Detected by chemiluminescence.