

Product datasheet for **TA302457**

CSRP2 Goat Polyclonal Antibody

Product data:

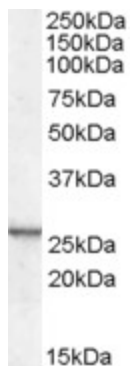
Product Type:	Primary Antibodies
Applications:	WB
Recommended Dilution:	ELISA: 1:64,000. WB: 0.1-0.3µg/ml.
Reactivity:	Human, Mouse, Rat (Expected from sequence similarity: Horse)
Host:	Goat
Isotype:	IgG
Clonality:	Polyclonal
Immunogen:	Peptide with sequence C-ERLGIKPESVQP, from the internal region of the protein sequence according to NP_001312.1.
Formulation:	Supplied at 0.5 mg/ml in Tris saline, 0.02% sodium azide, pH7.3 with 0.5% bovine serum albumin.
Purification:	Purified from goat serum by ammonium sulphate precipitation followed by antigen affinity chromatography using the immunizing peptide. Supplied at 0.5 mg/ml in Tris saline, 0.02% sodium azide, pH7.3 with 0.5% bovine serum albumin.
Conjugation:	Unconjugated
Storage:	Store at -20°C as received.
Stability:	Stable for 12 months from date of receipt.
Predicted Protein Size:	24577 Da
Gene Name:	cysteine and glycine rich protein 2
Database Link:	NP_001312 Entrez Gene 13008 Mouse Entrez Gene 29317 Rat Entrez Gene 1466 Human Q16527
Background:	CSRP2 is a member of the CSRP family of genes, encoding a group of LIM domain proteins, which may be involved in regulatory processes important for development and cellular differentiation. CRP2 contains two copies of the cysteine-rich amino acid sequence motif (LIM) with putative zinc-binding activity, and may be involved in regulating ordered cell growth. Other genes in the family include CSRP1 and CSRP3. COMPLETENESS: complete on the 3' end.



[View online »](#)

Synonyms: CRP2; LMO5; SmLIM

Product images:



TA302457 (0.1ug/ml) staining of mouse kidney lysate (35ug protein in RIPA buffer). Primary incubation was 1 hour. Detected by chemiluminescence.