

Product datasheet for **TA302455**

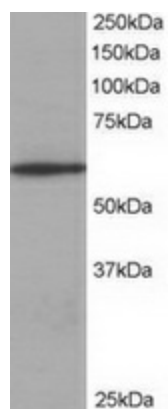
Coronin 1a (CORO1A) Goat Polyclonal Antibody

Product data:

Product Type:	Primary Antibodies
Applications:	WB
Recommended Dilution:	ELISA: 1:16,000. WB: 0.25-1µg/ml.
Reactivity:	Mouse, Human (Expected from sequence similarity: Rat, Dog, Cow)
Host:	Goat
Isotype:	IgG
Clonality:	Polyclonal
Immunogen:	Peptide with sequence C-KRLDRLEETVQAK, from the C Terminus of the protein sequence according to NP_009005.1.
Formulation:	Supplied at 0.5 mg/ml in Tris saline, 0.02% sodium azide, pH7.3 with 0.5% bovine serum albumin.
Concentration:	lot specific
Purification:	Purified from goat serum by ammonium sulphate precipitation followed by antigen affinity chromatography using the immunizing peptide. Supplied at 0.5 mg/ml in Tris saline, 0.02% sodium azide, pH7.3 with 0.5% bovine serum albumin.
Conjugation:	Unconjugated
Storage:	Store at -20°C as received.
Stability:	Stable for 12 months from date of receipt.
Predicted Protein Size:	54653 Da
Gene Name:	coronin 1A
Database Link:	NP_009005 Entrez Gene 12721 Mouse Entrez Gene 155151 Rat Entrez Gene 489949 Dog Entrez Gene 11151 Human P31146
Synonyms:	CLABP; CLIPINA; HCORO1; IMD8; p57; TACO



[View online »](#)

Product images:

TA302455 staining (0.3ug/ml) of Jurkat lysate (RIPA buffer, 35ug total protein per lane). Primary incubated for 1 hour. Detected by western blot using chemiluminescence.