

## Product datasheet for **TA302449**

### ABHD5 Goat Polyclonal Antibody

#### Product data:

Product Type:	Primary Antibodies
Applications:	WB
Recommended Dilution:	ELISA: 1:8,000. WB: 1-3µg/ml.
Reactivity:	Human, Mouse, Cow (Expected from sequence similarity: Rat, Dog)
Host:	Goat
Isotype:	IgG
Clonality:	Polyclonal
Immunogen:	Peptide with sequence C-FPERPDLADQDR, from the internal region of the protein sequence according to NP_057090.2.
Formulation:	Supplied at 0.5 mg/ml in Tris saline, 0.02% sodium azide, pH7.3 with 0.5% bovine serum albumin.
Concentration:	lot specific
Purification:	Purified from goat serum by ammonium sulphate precipitation followed by antigen affinity chromatography using the immunizing peptide. Supplied at 0.5 mg/ml in Tris saline, 0.02% sodium azide, pH7.3 with 0.5% bovine serum albumin.
Conjugation:	Unconjugated
Storage:	Store at -20°C as received.
Stability:	Stable for 12 months from date of receipt.
Predicted Protein Size:	42721 Da
Gene Name:	abhydrolase domain containing 5
Database Link:	<a href="#">NP_057090</a> <a href="#">Entrez Gene 67469 Mouse</a> <a href="#">Entrez Gene 316122 Rat</a> <a href="#">Entrez Gene 485570 Dog</a> <a href="#">Entrez Gene 51099 Human</a> <a href="#">Q8WTS1</a>



[View online »](#)

**Background:**

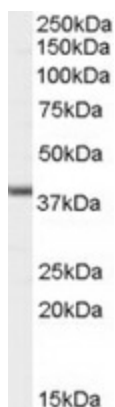
The protein encoded by this gene belongs to a large family of proteins defined by an alpha/beta hydrolase fold, and contains three sequence motifs that correspond to a catalytic triad found in the esterase/lipase/thioesterase subfamily. It differs from other members of this subfamily in that its putative catalytic triad contains an asparagine instead of the serine residue. Mutations in this gene have been associated with Chanarin-Dorfman syndrome, a triglyceride storage disease with impaired long-chain fatty acid oxidation. [provided by RefSeq]

**Synonyms:**

CDS; CGI58; IECN2; NCIE2

**Protein Families:**

Protease

**Product images:**

TA302449 (1ug/ml) staining of A431 cell line lysate (35ug protein in RIPA buffer). Primary incubation was 1 hour. Detected by chemiluminescence.