

## Product datasheet for **TA302448**

### Liver Carboxylesterase 1 (CES1) Goat Polyclonal Antibody

#### Product data:

Product Type:	Primary Antibodies
Applications:	WB
Recommended Dilution:	ELISA: 1:8,000. WB: 0.03-0.1µg/ml.
Reactivity:	Human
Host:	Goat
Isotype:	IgG
Clonality:	Polyclonal
Immunogen:	Peptide with sequence C-NTQAAQKLKDKE, from the internal region (near C terminus) of the protein sequence according to NP_001020366.1; NP_001020365.1; NP_001257.4.
Formulation:	Supplied at 0.5 mg/ml in Tris saline, 0.02% sodium azide, pH7.3 with 0.5% bovine serum albumin.
Purification:	Purified from goat serum by ammonium sulphate precipitation followed by antigen affinity chromatography using the immunizing peptide. Supplied at 0.5 mg/ml in Tris saline, 0.02% sodium azide, pH7.3 with 0.5% bovine serum albumin.
Conjugation:	Unconjugated
Storage:	Store at -20°C as received.
Stability:	Stable for 12 months from date of receipt.
Predicted Protein Size:	66022 Da
Gene Name:	carboxylesterase 1
Database Link:	<a href="#">NP_001257</a> <a href="#">Entrez Gene 1066 Human</a> <a href="#">P23141</a>



[View online »](#)

**Background:**

Carboxylesterase 1 is a member of a large multigene family. The enzymes encoded by these genes are responsible for the hydrolysis of ester- and amide-bond-containing drugs such as cocaine and heroin. They also hydrolyze long-chain fatty acid esters and thioesters. This enzyme is known to hydrolyze aromatic and aliphatic esters and is necessary for cellular cholesterol esterification. It may also play a role in detoxification in the lung and/or protection of the central nervous system from ester or amide compounds. Carboxylesterase deficiency may be associated with non-Hodgkin lymphoma or B-cell lymphocytic leukemia. Three transcript variants encoding three different isoforms have been found for this gene. [provided by RefSeq]

**Synonyms:**

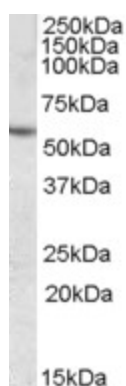
ACAT; CE-1; CEH; CES2; hCE-1; HMSE; HMSE1; PCE-1; REH; SES1; TGH

**Protein Families:**

Druggable Genome

**Protein Pathways:**

Drug metabolism - other enzymes

**Product images:**

TA302448 (0.03ug/ml) staining of Human Liver lysate (35ug protein in RIPA buffer). Primary incubation was 1 hour. Detected by chemiluminescence.