

Product datasheet for TA302447

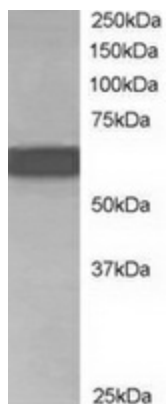
CDT1 Goat Polyclonal Antibody

Product data:

Product Type:	Primary Antibodies
Applications:	WB
Recommended Dilution:	ELISA: 1:64,000. WB: 1-3µg/ml.
Reactivity:	Human
Host:	Goat
Isotype:	IgG
Clonality:	Polyclonal
Immunogen:	Peptide with sequence C-ARLAHQTRAEEGL, from the C Terminus of the protein sequence according to NP_112190.1.
Formulation:	Supplied at 0.5 mg/ml in Tris saline, 0.02% sodium azide, pH7.3 with 0.5% bovine serum albumin.
Concentration:	lot specific
Purification:	Purified from goat serum by ammonium sulphate precipitation followed by antigen affinity chromatography using the immunizing peptide. Supplied at 0.5 mg/ml in Tris saline, 0.02% sodium azide, pH7.3 with 0.5% bovine serum albumin.
Storage:	Store at -20°C as received.
Stability:	Stable for 12 months from date of receipt.
Predicted Protein Size:	64018 Da
Gene Name:	chromatin licensing and DNA replication factor 1
Database Link:	NP_112190 Entrez Gene 81620 Human
Synonyms:	DUP; RIS2
Protein Families:	Stem cell - Pluripotency



[View online »](#)

Product images:

TA302447 staining (1ug/ml) of Human Brain lysate (RIPA buffer, 35ug total protein per lane). Primary incubated for 1 hour. Detected by western blot using chemiluminescence.