

Product datasheet for **TA302444**

Cytochrome P450 17A1 (CYP17A1) Goat Polyclonal Antibody

Product data:

Product Type:	Primary Antibodies
Applications:	WB
Recommended Dilution:	ELISA: 1:64,000. WB: 0.1-0.3µg/ml.
Reactivity:	Human (Expected from sequence similarity: Feline, Dog)
Host:	Goat
Isotype:	IgG
Clonality:	Polyclonal
Immunogen:	Peptide with sequence C-LFKDGDQKLEK, from the internal region of the protein sequence according to NP_000093.1.
Formulation:	Supplied at 0.5 mg/ml in Tris saline, 0.02% sodium azide, pH7.3 with 0.5% bovine serum albumin.
Concentration:	lot specific
Purification:	Purified from goat serum by ammonium sulphate precipitation followed by antigen affinity chromatography using the immunizing peptide. Supplied at 0.5 mg/ml in Tris saline, 0.02% sodium azide, pH7.3 with 0.5% bovine serum albumin.
Conjugation:	Unconjugated
Storage:	Store at -20°C as received.
Stability:	Stable for 12 months from date of receipt.
Predicted Protein Size:	60999 Da
Gene Name:	cytochrome P450 family 17 subfamily A member 1
Database Link:	NP_000093 Entrez Gene 477807 Dog Entrez Gene 1586 Human P05093



[View online »](#)

Background:

This gene encodes a member of the cytochrome P450 superfamily of enzymes. The cytochrome P450 proteins are monooxygenases which catalyze many reactions involved in drug metabolism and synthesis of cholesterol, steroids and other lipids. This protein localizes to the endoplasmic reticulum. It has both 17 α -hydroxylase and 17,20-lyase activities and is a key enzyme in the steroidogenic pathway that produces progestins, mineralocorticoids, glucocorticoids, androgens, and estrogens. Mutations in this gene are associated with isolated steroid-17 α -hydroxylase deficiency, 17- α -hydroxylase/17,20-lyase deficiency, pseudohermaphroditism, and adrenal hyperplasia. [provided by RefSeq]

Synonyms:

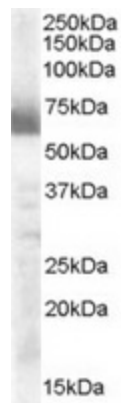
CPT7; CYP17; P450C17; S17AH

Protein Families:

Druggable Genome, P450

Protein Pathways:

C21-Steroid hormone metabolism, Metabolic pathways

Product images:

TA302444 (0.3 μ g/ml) staining of human ovary lysate (35 μ g protein in RIPA buffer). Primary incubation was 1 hour. Detected by chemiluminescence.