

Product datasheet for **TA302440**

CARD11 Goat Polyclonal Antibody

Product data:

Product Type:	Primary Antibodies
Applications:	IHC, WB
Recommended Dilution:	ELISA: 1:32,000. WB: 1-3µg/ml.
Reactivity:	Human (Expected from sequence similarity: Mouse, Dog, Cow)
Host:	Goat
Isotype:	IgG
Clonality:	Polyclonal
Immunogen:	Peptide with sequence C-QRKTIWVDEDQL, from the C Terminus of the protein sequence according to NP_115791.2.
Formulation:	Supplied at 0.5 mg/ml in Tris saline, 0.02% sodium azide, pH7.3 with 0.5% bovine serum albumin.
Concentration:	lot specific
Purification:	Purified from goat serum by ammonium sulphate precipitation followed by antigen affinity chromatography using the immunizing peptide. Supplied at 0.5 mg/ml in Tris saline, 0.02% sodium azide, pH7.3 with 0.5% bovine serum albumin.
Conjugation:	Unconjugated
Storage:	Store at -20°C as received.
Stability:	Stable for 12 months from date of receipt.
Predicted Protein Size:	136922 Da
Gene Name:	caspase recruitment domain family member 11
Database Link:	NP_115791 Entrez Gene 108723 Mouse Entrez Gene 489887 Dog Entrez Gene 84433 Human Q9BXL7



[View online »](#)

Background:

The protein encoded by this gene belongs to the membrane-associated guanylate kinase (MAGUK) family, a class of proteins that functions as molecular scaffolds for the assembly of multiprotein complexes at specialized regions of the plasma membrane. This protein is also a member of the CARD protein family, which is defined by carrying a characteristic caspase-associated recruitment domain (CARD). This protein has a domain structure similar to that of CARD14 protein. The CARD domains of both proteins have been shown to specifically interact with BCL10, a protein known to function as a positive regulator of cell apoptosis and NF-kappaB activation. When expressed in cells, this protein activated NF-kappaB and induced the phosphorylation of BCL10. [provided by RefSeq]

Synonyms:

BENTA; BIMP3; CARMA1; IMD11; PPBL

Protein Families:

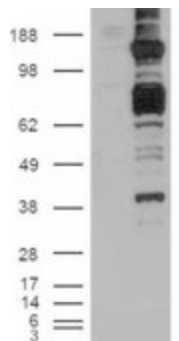
Druggable Genome

Protein Pathways:

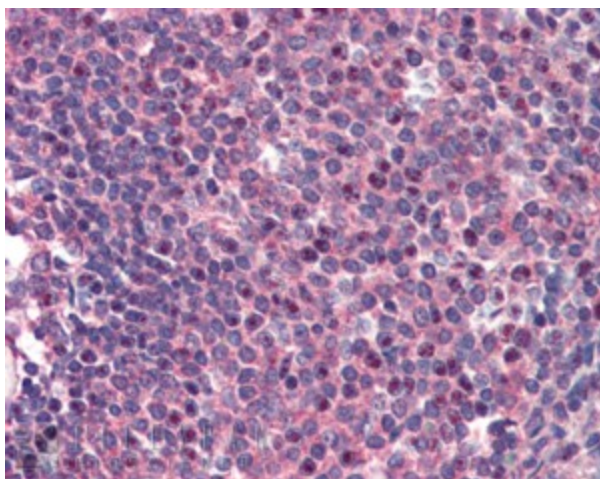
B cell receptor signaling pathway, T cell receptor signaling pathway

Product images:


TA302440 staining (1ug/ml) of human Jurkat cells (RIPA buffer, 35ug total protein per lane). Primary incubated for 1 hour. Detected by western blot using chemiluminescence.



HEK293 overexpressing CARD11 ([RC222740]) and probed with TA302440 (mock transfection in first lane)



TA302440 (2ug/ml) staining of paraffin embedded Human Spleen. Steamed antigen retrieval with citrate buffer pH 6, AP-staining.