

## Product datasheet for **TA302439**

### Cannabinoid Receptor I (CNR1) Goat Polyclonal Antibody

#### Product data:

Product Type:	Primary Antibodies
Applications:	WB
Recommended Dilution:	ELISA: 1:32,000. WB: 1-3µg/ml.
Reactivity:	Human, Mouse (Expected from sequence similarity: Rat, Dog)
Host:	Goat
Isotype:	IgG
Clonality:	Polyclonal
Immunogen:	Peptide with sequence C-HTSEDGKVVTRPDQ, from the internal region of the protein sequence according to NP_057167.2; NP_149421.1.
Formulation:	Supplied at 0.5 mg/ml in Tris saline, 0.02% sodium azide, pH7.3 with 0.5% bovine serum albumin.
Concentration:	lot specific
Purification:	Purified from goat serum by ammonium sulphate precipitation followed by antigen affinity chromatography using the immunizing peptide. Supplied at 0.5 mg/ml in Tris saline, 0.02% sodium azide, pH7.3 with 0.5% bovine serum albumin.
Conjugation:	Unconjugated
Storage:	Store at -20°C as received.
Stability:	Stable for 12 months from date of receipt.
Predicted Protein Size:	49501 Da
Gene Name:	cannabinoid receptor 1 (brain)
Database Link:	<a href="#">NP_149421</a> <a href="#">Entrez Gene 12801 Mouse</a> <a href="#">Entrez Gene 25248 Rat</a> <a href="#">Entrez Gene 481913 Dog</a> <a href="#">Entrez Gene 1268 Human</a> <a href="#">P21554</a>



[View online »](#)

**Background:**

This gene encodes a protein that is one of two cannabinoid receptors. The cannabinoids, principally delta-9-tetrahydrocannabinol and synthetic analogs, are psychoactive ingredients of marijuana. The cannabinoid receptors are members of the family of guanine-nucleotide-binding protein (G-protein) coupled receptors which inhibit adenylate cyclase activity in a dose-dependent, stereoselective and pertussis toxin-sensitive manner. The two receptors have been found to be involved in the cannabinoid-induced CNS effects (including alterations in mood and cognition) experienced by users of marijuana. Two transcript variants encoding different isoforms have been described for this gene. [provided by RefSeq]

**Synonyms:**

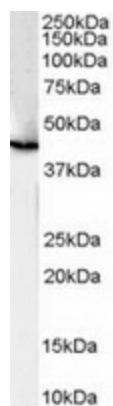
CANN6; CB-R; CB1; CB1A; CB1K5; CB1R; CNR

**Protein Families:**

Druggable Genome, GPCR, Transmembrane

**Protein Pathways:**

Neuroactive ligand-receptor interaction

**Product images:**

TA302439 (1ug/ml) staining of human brain lysate (35ug protein in RIPA buffer). Primary incubation was 1 hour. Detected by chemiluminescence.