

Product datasheet for **TA302438**

CACNB4 Goat Polyclonal Antibody

Product data:

Product Type:	Primary Antibodies
Applications:	WB
Recommended Dilution:	ELISA: 1:4,000. WB: 0.2-0.6 µg/ml.
Reactivity:	Human (Expected from sequence similarity: Mouse, Rat, Dog)
Host:	Goat
Isotype:	IgG
Clonality:	Polyclonal
Immunogen:	Peptide with sequence C-DYPDSYQDTYKPH, from the internal region (near the C Terminus) of the protein sequence according to NP_001005747.1; NP_000717.2; NP_001005746.1.
Formulation:	Supplied at 0.5 mg/ml in Tris saline, 0.02% sodium azide, pH7.3 with 0.5% bovine serum albumin.
Concentration:	lot specific
Purification:	Purified from goat serum by ammonium sulphate precipitation followed by antigen affinity chromatography using the immunizing peptide. Supplied at 0.5 mg/ml in Tris saline, 0.02% sodium azide, pH7.3 with 0.5% bovine serum albumin.
Conjugation:	Unconjugated
Storage:	Store at -20°C as received.
Stability:	Stable for 12 months from date of receipt.
Predicted Protein Size:	61797 Da
Gene Name:	calcium voltage-gated channel auxiliary subunit beta 4
Database Link:	NP_000717 Entrez Gene 12298 Mouse Entrez Gene 58942 Rat Entrez Gene 609361 Dog Entrez Gene 785 Human O00305


[View online »](#)

Background:

This gene encodes a member of the beta subunit family, a protein in the voltage-dependent calcium channel complex. Calcium channels mediate the influx of calcium ions into the cell upon membrane polarization and consist of a complex of alpha-1, alpha-2/delta, beta, and gamma subunits in a 1:1:1:1 ratio. Various versions of each of these subunits exist, either expressed from similar genes or the result of alternative splicing. The protein described in this record plays an important role in calcium channel function by modulating G protein inhibition, increasing peak calcium current, controlling the alpha-1 subunit membrane targeting and shifting the voltage dependence of activation and inactivation. Certain mutations in this gene have been associated with idiopathic generalized epilepsy (IGE) and juvenile myoclonic epilepsy (JME). Alternate transcriptional splice variants of this gene, encoding different isoforms, have been characterized. [provided by RefSeq]

Synonyms:

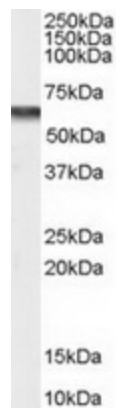
CAB4; CACNLB4; EA5; EIG9; EJM; EJM4; EJM6

Protein Families:

Druggable Genome, Ion Channels: Other

Protein Pathways:

Arrhythmogenic right ventricular cardiomyopathy (ARVC), Cardiac muscle contraction, Dilated cardiomyopathy, Hypertrophic cardiomyopathy (HCM), MAPK signaling pathway

Product images:


TA302438 (0.2ug/ml) staining of Human Bone Marrow lysate (35ug protein in RIPA buffer). Primary incubation was 1 hour. Detected by chemiluminescence.