

Product datasheet for **TA302435**

BNIP1 Goat Polyclonal Antibody

Product data:

| | |
|-------------------------|--|
| Product Type: | Primary Antibodies |
| Applications: | WB |
| Recommended Dilution: | ELISA: 1:8,000. WB: 0.5-1.5µg/ml. |
| Reactivity: | Human (Expected from sequence similarity: Mouse, Rat) |
| Host: | Goat |
| Isotype: | IgG |
| Clonality: | Polyclonal |
| Immunogen: | Peptide with sequence C-DLLRQRKTTKESLAQ, from the internal region of the protein sequence according to NP_001196.1; NP_053581.1; NP_053582.1; NP_053583.1. |
| Formulation: | Supplied at 0.5 mg/ml in Tris saline, 0.02% sodium azide, pH7.3 with 0.5% bovine serum albumin. |
| Concentration: | lot specific |
| Purification: | Purified from goat serum by ammonium sulphate precipitation followed by antigen affinity chromatography using the immunizing peptide. Supplied at 0.5 mg/ml in Tris saline, 0.02% sodium azide, pH7.3 with 0.5% bovine serum albumin. |
| Conjugation: | Unconjugated |
| Storage: | Store at -20°C as received. |
| Stability: | Stable for 12 months from date of receipt. |
| Predicted Protein Size: | 29756 Da |
| Gene Name: | BCL2/adenovirus E1B 19kDa interacting protein 1 |
| Database Link: | NP_001196 Entrez Gene 140932 Rat Entrez Gene 224630 Mouse Entrez Gene 662 Human Q12981 |
| Background: | This gene is a member of the BCL2/adenovirus E1B 19 kd-interacting protein (BNIP) family. It interacts with the E1B 19 kDa protein which is responsible for the protection of virally-induced cell death, as well as E1B 19 kDa-like sequences of BCL2, also an apoptotic protector. Alternative splicing of this gene results in four protein products with identical N- and C-termini. |



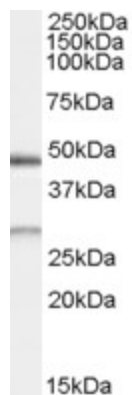
[View online »](#)

Synonyms: NIP1; SEC20; TRG-8

Protein Families: Druggable Genome, Transmembrane

Protein Pathways: SNARE interactions in vesicular transport

Product images:



TA302435 (0.5ug/ml) staining of Human Kidney lysate (35ug protein in RIPA buffer). Primary incubation was 1 hour. Detected by chemiluminescence.