

Product datasheet for **TA302433**

BHMT Goat Polyclonal Antibody

Product data:

Product Type:	Primary Antibodies
Applications:	WB
Recommended Dilution:	ELISA: 1:16,000. WB: 0.03-0.1µg/ml.
Reactivity:	Human, Mouse, Rat (Expected from sequence similarity: Dog)
Host:	Goat
Isotype:	IgG
Clonality:	Polyclonal
Immunogen:	Peptide with sequence C-EQQLKELFEKQK, from the C Terminus of the protein sequence according to NP_001704.1.
Formulation:	Supplied at 0.5 mg/ml in Tris saline, 0.02% sodium azide, pH7.3 with 0.5% bovine serum albumin.
Concentration:	lot specific
Purification:	Purified from goat serum by ammonium sulphate precipitation followed by antigen affinity chromatography using the immunizing peptide. Supplied at 0.5 mg/ml in Tris saline, 0.02% sodium azide, pH7.3 with 0.5% bovine serum albumin.
Conjugation:	Unconjugated
Storage:	Store at -20°C as received.
Stability:	Stable for 12 months from date of receipt.
Predicted Protein Size:	48625 Da
Gene Name:	betaine--homocysteine S-methyltransferase
Database Link:	NP_001704 Entrez Gene 12116 Mouse Entrez Gene 81508 Rat Entrez Gene 479171 Dog Entrez Gene 635 Human Q93088
Background:	This gene encodes a cytosolic enzyme that catalyzes the conversion of betaine and homocysteine to dimethylglycine and methionine, respectively. Defects in this gene could lead to hyperhomocyst(e)inemia, but such a defect has not yet been observed. [provided by RefSeq]



[View online »](#)

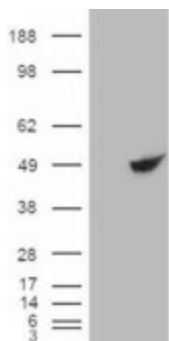
Synonyms: BHMT1; HEL-S-61p

Protein Pathways: Cysteine and methionine metabolism, Glycine, serine and threonine metabolism, Metabolic pathways

Product images:



TA302433 (0.03ug/ml) staining of Rat Liver lysate (35ug protein in RIPA buffer). Primary incubation was 1 hour. Detected by chemiluminescence.



HEK293 overexpressing BHMT [RC203148] and probed with TA302433 (mock transfection in first lane)