

## Product datasheet for TA302431

### BDH2 Goat Polyclonal Antibody

#### Product data:

Product Type:	Primary Antibodies
Applications:	IHC, WB
Recommended Dilution:	ELISA: 1:64000. WB:0.3-1µg/ml.IHC:5µg/ml
Reactivity:	Human (Expected from sequence similarity: Mouse, Rat)
Host:	Goat
Isotype:	IgG
Clonality:	Polyclonal
Immunogen:	Peptide with sequence C-TKKKQIDQFANE, from the internal region of the protein sequence according to NP_064524.3.
Formulation:	Supplied at 0.5 mg/ml in Tris saline, 0.02% sodium azide, pH7.3 with 0.5% bovine serum albumin.
Purification:	Purified from goat serum by ammonium sulphate precipitation followed by antigen affinity chromatography using the immunizing peptide. Supplied at 0.5 mg/ml in Tris saline, 0.02% sodium azide, pH7.3 with 0.5% bovine serum albumin.
Storage:	Store at -20°C as received.
Stability:	Stable for 12 months from date of receipt.
Predicted Protein Size:	30348 Da
Gene Name:	3-hydroxybutyrate dehydrogenase, type 2
Database Link:	<a href="#">NP_064524</a> Entrez Gene <a href="#">69772</a> MouseEntrez Gene <a href="#">295458</a> RatEntrez Gene <a href="#">56898</a> Human
Synonyms:	DHRS6; EFA6R; PRO20933; SDR15C1; UCPA-OR; UNQ6308
Protein Families:	Druggable Genome
Protein Pathways:	Butanoate metabolism, Metabolic pathways, Synthesis and degradation of ketone bodies

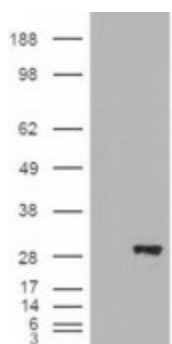


[View online »](#)

## Product images:



TA302431 (0.3ug/ml) staining of Human Kidney lysate (35ug protein in RIPA buffer). Primary incubation was 1 hour. Detected by chemiluminescence.



HEK293 overexpressing BDH2 ([RC210586]) and probed with TA302431 (mock transfection in first lane)

TA302431 (5ug/ml) staining of paraffin embedded Human Kidney. Steamed antigen retrieval with citrate buffer pH 6, AP-staining.