

Product datasheet for **TA302429**

BAIAP2 Goat Polyclonal Antibody

Product data:

Product Type:	Primary Antibodies
Applications:	WB
Recommended Dilution:	ELISA: 1:16,000. WB: 1-3µg/ml.
Reactivity:	Human (Expected from sequence similarity: Dog, Cow)
Host:	Goat
Isotype:	IgG
Clonality:	Polyclonal
Immunogen:	Peptide with sequence C-SMSSADVEVARF, from the C Terminus of the protein sequence according to NP_006331.1.
Formulation:	Supplied at 0.5 mg/ml in Tris saline, 0.02% sodium azide, pH7.3 with 0.5% bovine serum albumin.
Concentration:	lot specific
Purification:	Purified from goat serum by ammonium sulphate precipitation followed by antigen affinity chromatography using the immunizing peptide. Supplied at 0.5 mg/ml in Tris saline, 0.02% sodium azide, pH7.3 with 0.5% bovine serum albumin.
Conjugation:	Unconjugated
Storage:	Store at -20°C as received.
Stability:	Stable for 12 months from date of receipt.
Predicted Protein Size:	60987 Da
Gene Name:	BAI1 associated protein 2
Database Link:	NP_059344 Entrez Gene 403473 Dog Entrez Gene 10458 Human Q9UQB8



[View online »](#)

Background:

The protein encoded by this gene has been identified as a brain-specific angiogenesis inhibitor (BAI1)-binding protein. This adaptor protein links membrane bound G-proteins to cytoplasmic effector proteins. This protein functions as an insulin receptor tyrosine kinase substrate and suggests a role for insulin in the central nervous system. It also associates with a downstream effector of Rho small G proteins, which is associated with the formation of stress fibers and cytokinesis. This protein is involved in lamellipodia and filopodia formation in motile cells and may affect neuronal growth-cone guidance. This protein has also been identified as interacting with the dentatorubral-pallidoluysian atrophy gene, which is associated with an autosomal dominant neurodegenerative disease. Alternative splicing results in multiple transcript variants encoding distinct isoforms.

Synonyms:

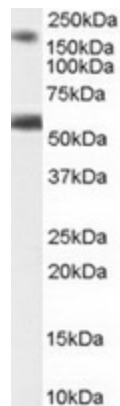
BAP2; FLAF3; IRSP53

Protein Families:

Druggable Genome

Protein Pathways:

Adherens junction, Regulation of actin cytoskeleton

Product images:

TA302429 staining (1ug/ml) of Human Brain (Cerebellum) lysate (RIPA buffer, 35ug total protein per lane). Primary incubated for 12 hour. Detected by western blot using chemiluminescence.