

## Product datasheet for **TA302427**

### **BAIAP2 Goat Polyclonal Antibody**

#### **Product data:**

<b>Product Type:</b>	Primary Antibodies
<b>Applications:</b>	WB
<b>Recommended Dilution:</b>	ELISA: 1:64,000. WB 1-3µg/ml.
<b>Reactivity:</b>	Human (Expected from sequence similarity: Mouse, Rat)
<b>Host:</b>	Goat
<b>Isotype:</b>	IgG
<b>Clonality:</b>	Polyclonal
<b>Immunogen:</b>	Peptide with sequence C-SGSGTLVSTV, from the C Terminus of the protein sequence according to NP_059344.1.
<b>Formulation:</b>	Supplied at 0.5 mg/ml in Tris saline, 0.02% sodium azide, pH7.3 with 0.5% bovine serum albumin.
<b>Concentration:</b>	lot specific
<b>Purification:</b>	Purified from goat serum by ammonium sulphate precipitation followed by antigen affinity chromatography using the immunizing peptide. Supplied at 0.5 mg/ml in Tris saline, 0.02% sodium azide, pH7.3 with 0.5% bovine serum albumin.
<b>Conjugation:</b>	Unconjugated
<b>Storage:</b>	Store at -20°C as received.
<b>Stability:</b>	Stable for 12 months from date of receipt.
<b>Predicted Protein Size:</b>	60987 Da
<b>Gene Name:</b>	BAI1 associated protein 2
<b>Database Link:</b>	<a href="#">NP_059344</a> <a href="#">Entrez Gene 108100 Mouse</a> <a href="#">Entrez Gene 117542 Rat</a> <a href="#">Entrez Gene 10458 Human</a> <a href="#">Q9UQB8</a>



[View online »](#)

**Background:**

The protein encoded by this gene has been identified as a brain-specific angiogenesis inhibitor (BAI1)-binding protein. This adaptor protein links membrane bound G-proteins to cytoplasmic effector proteins. This protein functions as an insulin receptor tyrosine kinase substrate and suggests a role for insulin in the central nervous system. It also associates with a downstream effector of Rho small G proteins, which is associated with the formation of stress fibers and cytokinesis. This protein is involved in lamellipodia and filopodia formation in motile cells and may affect neuronal growth-cone guidance. This protein has also been identified as interacting with the dentatorubral-pallidoluysian atrophy gene, which is associated with an autosomal dominant neurodegenerative disease. Alternative splicing results in multiple transcript variants encoding distinct isoforms.

**Synonyms:**

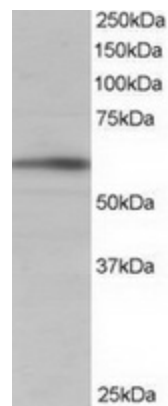
BAP2; FLAF3; IRSP53

**Protein Families:**

Druggable Genome

**Protein Pathways:**

Adherens junction, Regulation of actin cytoskeleton

**Product images:**

TA302427 staining (1ug/ml) of Human Brain lysate (RIPA buffer, 35ug total protein per lane). Primary incubated for 1 hour. Detected by western blot using chemiluminescence.