

Product datasheet for TA302424

PPP2R5B Goat Polyclonal Antibody

Product data:

Product Type:	Primary Antibodies
Applications:	WB
Recommended Dilution:	WB: 0.5-2µg/ml.
Reactivity:	Human (Expected from sequence similarity: Mouse, Rat, Dog)
Host:	Goat
Isotype:	IgG
Clonality:	Polyclonal
Immunogen:	Peptide with sequence C-QRLTPQVAASGGQS, from the C Terminus of the protein sequence according to NP_006235.1.
Formulation:	Supplied at 0.5 mg/ml in Tris saline, 0.02% sodium azide, pH7.3 with 0.5% bovine serum albumin.
Concentration:	lot specific
Purification:	Purified from goat serum by ammonium sulphate precipitation followed by antigen affinity chromatography using the immunizing peptide. Supplied at 0.5 mg/ml in Tris saline, 0.02% sodium azide, pH7.3 with 0.5% bovine serum albumin.
Storage:	Store at -20°C as received.
Stability:	Stable for 12 months from date of receipt.
Predicted Protein Size:	61021 Da
Gene Name:	protein phosphatase 2 regulatory subunit B'beta
Database Link:	NP_006235 Entrez Gene 225849 Mouse Entrez Gene 309179 Rat Entrez Gene 483755 Dog Entrez Gene 5526 Human
Background:	The product of this gene belongs to the phosphatase 2A regulatory subunit B family. Protein phosphatase 2A is one of the four major Ser/Thr phosphatases, and it is implicated in the negative control of cell growth and division. It consists of a common heteromeric core enzyme, which is composed of a catalytic subunit and a constant regulatory subunit, that associates with a variety of regulatory subunits. The B regulatory subunit might modulate substrate selectivity and catalytic activity. This gene encodes a beta isoform of the regulatory subunit B56 subfamily.



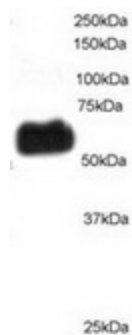
[View online »](#)

Synonyms: B56B; PR61B

Protein Families: Druggable Genome, Phosphatase

Protein Pathways: Oocyte meiosis, Wnt signaling pathway

Product images:



TA302424 staining (0.5ug/ml) of Mouse Brain lysate (RIPA buffer, 35ug total protein per lane). Primary incubated for 1 hour. Detected by western blot using chemiluminescence.