

Product datasheet for **TA302416**

ARHGEF4 Goat Polyclonal Antibody

Product data:

Product Type:	Primary Antibodies
Applications:	WB
Recommended Dilution:	ELISA: 1:32,000. WB: 2-4µg/ml.
Reactivity:	Human
Host:	Goat
Isotype:	IgG
Clonality:	Polyclonal
Immunogen:	Peptide with sequence PWEEPAGEKPCS, from the N Terminus of the protein sequence according to NP_056135.2; NP_127462.1.
Formulation:	Supplied at 0.5 mg/ml in Tris saline, 0.02% sodium azide, pH7.3 with 0.5% bovine serum albumin.
Concentration:	lot specific
Purification:	Purified from goat serum by ammonium sulphate precipitation followed by antigen affinity chromatography using the immunizing peptide. Supplied at 0.5 mg/ml in Tris saline, 0.02% sodium azide, pH7.3 with 0.5% bovine serum albumin.
Conjugation:	Unconjugated
Storage:	Store at -20°C as received.
Stability:	Stable for 12 months from date of receipt.
Predicted Protein Size:	82697 Da
Gene Name:	Rho guanine nucleotide exchange factor 4
Database Link:	NP_056135 Entrez Gene 50649 Human Q9NR80



[View online »](#)

Background:

Rho GTPases play a fundamental role in numerous cellular processes that are initiated by extracellular stimuli that work through G protein coupled receptors. The encoded protein may form complex with G proteins and stimulate Rho-dependent signals. This protein is similar to rat collybistin protein. Alternative splicing of this gene generates two transcript variants which encode different isoforms. Also there is possibility for the usage of multiple polyadenylation sites for this gene. [provided by RefSeq]

Synonyms:

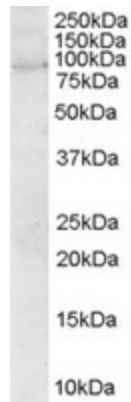
ASEF; ASEF1; GEF4; STM6

Protein Families:

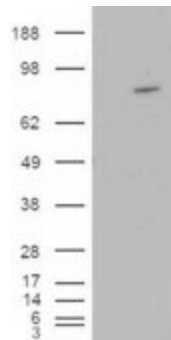
Druggable Genome

Protein Pathways:

Regulation of actin cytoskeleton

Product images:


TA302416 (2ug/ml) staining of Human Brain lysate (35ug protein in RIPA buffer). Primary incubation was 1 hour. Detected by chemiluminescence.



HEK293 overexpressing ARHGEF4 ([RC215591]) and probed with TA302416 (mock transfection in first lane)