

Product datasheet for **TA302410**

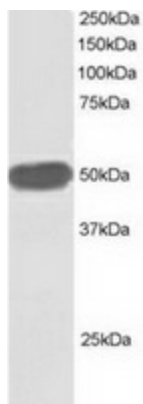
TRIP15 (COPS2) Goat Polyclonal Antibody

Product data:

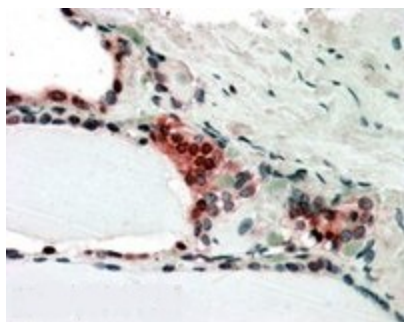
Product Type:	Primary Antibodies
Applications:	IHC, WB
Recommended Dilution:	ELISA: 1:8,000. WB 1µg/ml.
Reactivity:	Human, Mouse (Expected from sequence similarity: Rat, Dog, Cow)
Host:	Goat
Isotype:	IgG
Clonality:	Polyclonal
Immunogen:	Peptide with sequence C-LNSLNQAWSKLA, from the C Terminus of the protein sequence according to NP_004227.1.
Formulation:	Supplied at 0.5 mg/ml in Tris saline, 0.02% sodium azide, pH7.3 with 0.5% bovine serum albumin.
Concentration:	lot specific
Purification:	Purified from goat serum by ammonium sulphate precipitation followed by antigen affinity chromatography using the immunizing peptide. Supplied at 0.5 mg/ml in Tris saline, 0.02% sodium azide, pH7.3 with 0.5% bovine serum albumin.
Conjugation:	Unconjugated
Storage:	Store at -20°C as received.
Stability:	Stable for 12 months from date of receipt.
Predicted Protein Size:	55224 Da
Gene Name:	COP9 signalosome subunit 2
Database Link:	NP_004227 Entrez Gene 12848 Mouse Entrez Gene 261736 Rat Entrez Gene 478295 Dog Entrez Gene 9318 Human P61201
Synonyms:	ALIEN; CSN2; SGN2; TRIP15
Protein Families:	Druggable Genome, Transcription Factors



[View online »](#)

Product images:

TA302410 staining (1ug/ml) of NIH-3T3 lysates (RIPA buffer, 30ug total protein per lane). Primary incubated for 1 hour. Detected by western blot using chemiluminescence.



In paraffin embedded Human Thyroid Gland shows nuclear and cytoplasm staining in activated epithelial cells. Recommended concentration, 3-5ug/ml.