

## Product datasheet for **TA302408**

### **AKR1A1 Goat Polyclonal Antibody**

#### **Product data:**

<b>Product Type:</b>	Primary Antibodies
<b>Applications:</b>	IHC, WB
<b>Recommended Dilution:</b>	ELISA: 1:16,000. WB 0.5-2µg/ml.
<b>Reactivity:</b>	Human (Expected from sequence similarity: Mouse, Rat, Dog, Pig, Cow)
<b>Host:</b>	Goat
<b>Isotype:</b>	IgG
<b>Clonality:</b>	Polyclonal
<b>Immunogen:</b>	Peptide with sequence C-DAGHPLYPFNDPY, from the C Terminus of the protein sequence according to NP_006057.1; NP_697021.1.
<b>Formulation:</b>	Supplied at 0.5 mg/ml in Tris saline, 0.02% sodium azide, pH7.3 with 0.5% bovine serum albumin.
<b>Concentration:</b>	lot specific
<b>Purification:</b>	Purified from goat serum by ammonium sulphate precipitation followed by antigen affinity chromatography using the immunizing peptide. Supplied at 0.5 mg/ml in Tris saline, 0.02% sodium azide, pH7.3 with 0.5% bovine serum albumin.
<b>Conjugation:</b>	Unconjugated
<b>Storage:</b>	Store at -20°C as received.
<b>Stability:</b>	Stable for 12 months from date of receipt.
<b>Predicted Protein Size:</b>	40198 Da
<b>Gene Name:</b>	aldo-keto reductase family 1, member A1 (aldehyde reductase)
<b>Database Link:</b>	<a href="#">NP_006057</a> <a href="#">Entrez Gene 58810 Mouse</a> <a href="#">Entrez Gene 78959 Rat</a> <a href="#">Entrez Gene 610537 Dog</a> <a href="#">Entrez Gene 10327 Human</a> <a href="#">P14550</a>



[View online »](#)

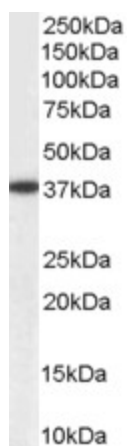
**Background:** This gene encodes a member of the aldo/keto reductase superfamily, which consists of more than 40 known enzymes and proteins. This member, also known as aldehyde reductase, is involved in the reduction of biogenic and xenobiotic aldehydes and is present in virtually every tissue. Alternative splicing of this gene results in two transcript variants encoding the same protein. [provided by RefSeq]

**Synonyms:** ALDR1; ALR; ARM; DD3; HEL-S-6

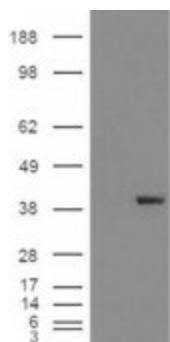
**Protein Families:** Druggable Genome

**Protein Pathways:** Glycerolipid metabolism, Glycolysis / Gluconeogenesis, Metabolic pathways

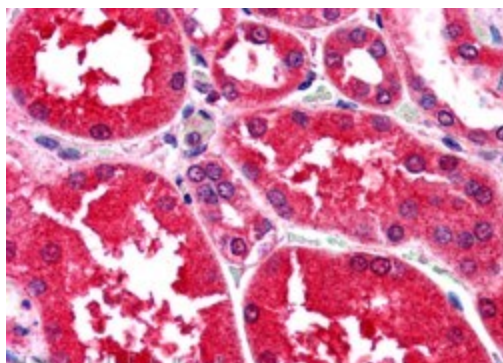
**Product images:**



TA302408 (0.1ug/ml) staining of Human Liver lysate (35ug protein in RIPA buffer). Primary incubation was 1 hour. Detected by chemiluminescence.chemiluminescence.



HEK293 overexpressing AKR1A1 ([RC200302]) and probed with TA302408 (mock transfection in first lane).



TA302408 (2.5g/ml) staining of paraffin embedded Human Kidney. Steamed antigen retrieval with citrate buffer pH 6, AP-staining.