

Product datasheet for **TA302401**

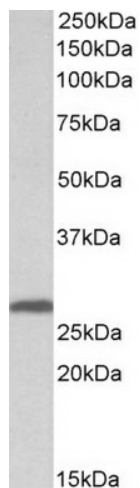
14-3-3 sigma (SFN) Goat Polyclonal Antibody

Product data:

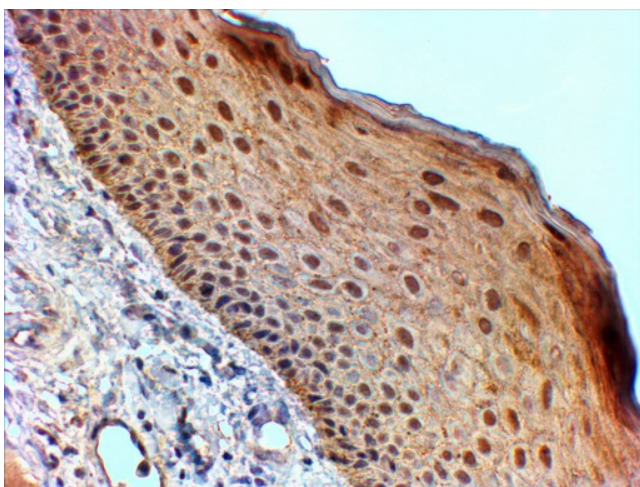
Product Type:	Primary Antibodies
Applications:	IHC, WB
Recommended Dilution:	WB: 0.03-0.1 µg/ml. IHC: 2-4 µg/ml.
Reactivity:	Human (Expected from sequence similarity: Mouse, Rat, Dog, Pig)
Host:	Goat
Isotype:	IgG
Clonality:	Polyclonal
Immunogen:	Peptide with sequence C-DLHTLSEDSYKDST, from the internal region of the protein sequence according to NP_006133.1.
Formulation:	Supplied at 0.5 mg/ml in Tris saline, 0.02% sodium azide, pH7.3 with 0.5% bovine serum albumin.
Concentration:	lot specific
Purification:	Purified from goat serum by ammonium sulphate precipitation followed by antigen affinity chromatography using the immunizing peptide. Supplied at 0.5 mg/ml in Tris saline, 0.02% sodium azide, pH7.3 with 0.5% bovine serum albumin.
Conjugation:	Unconjugated
Storage:	Store at -20°C as received.
Stability:	Stable for 12 months from date of receipt.
Predicted Protein Size:	31398 Da
Gene Name:	stratifin
Database Link:	NP_006133 Entrez Gene 55948 Mouse Entrez Gene 313017 Rat Entrez Gene 487351 Dog Entrez Gene 2810 Human P31947
Synonyms:	YWHAS
Protein Families:	Druggable Genome, Secreted Protein
Protein Pathways:	Cell cycle, p53 signaling pathway



[View online »](#)

Product images:

TA302401 (0.03 ug/ml) staining of Human Skin lysate (35 ug protein in RIPA buffer). Primary incubation was 1 hour. Detected by chemiluminescence.



TA302401 (2 ug/ml) staining of paraffin embedded Human Skin. Steamed antigen retrieval with Tris/EDTA buffer pH 9, HRP-staining.