

## Product datasheet for **TA302374**

### ZIC4 Rabbit Polyclonal Antibody

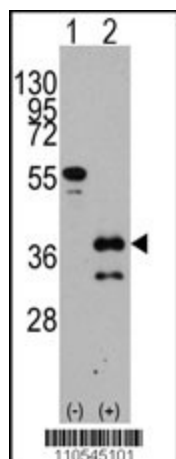
#### Product data:

Product Type:	Primary Antibodies
Applications:	WB
Recommended Dilution:	WB: 1:1000
Reactivity:	Human
Host:	Rabbit
Isotype:	Ig
Clonality:	Polyclonal
Immunogen:	This ZIC4 antibody is generated from rabbits immunized with a KLH conjugated synthetic peptide between 299-334 amino acids from the C-terminal region of human ZIC4.
Formulation:	Purified polyclonal antibody supplied in PBS with 0.09% (W/V) sodium azide.
Concentration:	lot specific
Purification:	This antibody is purified through a protein A column, followed by peptide affinity purification.
Conjugation:	Unconjugated
Storage:	Store at -20°C as received.
Stability:	Stable for 12 months from date of receipt.
Predicted Protein Size:	36567 Da
Gene Name:	Zic family member 4
Database Link:	<a href="#">NP_115529</a> <a href="#">Entrez Gene 84107 Human</a> <a href="#">Q8N9L1</a>
Background:	ZIC4 is a member of the ZIC family of C2H2-type zinc finger proteins. Members of this family are important during development, and have been associated with X-linked visceral heterotaxy and holoprosencephaly type 5.
Synonyms:	FLJ42609; FLJ45833



[View online »](#)

## Product images:



Western blot analysis of ZIC4 (arrow) using rabbit polyclonal ZIC4 Antibody (C-term) (Cat.#TA302374).