

Product datasheet for **TA302286S**

PARG Rabbit Polyclonal Antibody

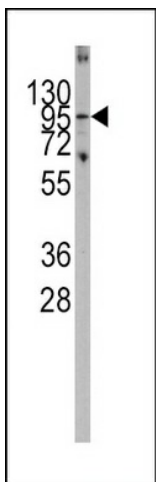
Product data:

Product Type:	Primary Antibodies
Applications:	IHC, WB
Recommended Dilution:	WB: 1:1000, IHC: 1:10~50
Reactivity:	Human (Predicted: Mouse)
Host:	Rabbit
Isotype:	Ig
Clonality:	Polyclonal
Immunogen:	This Parg antibody is generated from rabbits immunized with a KLH conjugated synthetic peptide between 390-421 amino acids from the C-terminal region of human Parg.
Formulation:	Purified polyclonal antibody supplied in PBS with 0.09% (W/V) sodium azide.
Purification:	This antibody is prepared by Saturated Ammonium Sulfate (SAS) precipitation followed by dialysis against PBS.
Conjugation:	Unconjugated
Storage:	Store at -20°C as received.
Stability:	Stable for 12 months from date of receipt.
Predicted Protein Size:	111110 Da
Gene Name:	poly(ADP-ribose) glycohydrolase
Database Link:	NP_003622 Entrez Gene 26430 Mouse Entrez Gene 8505 Human Q86W56
Background:	Poly(ADP-ribose) glycohydrolase (PARG) is the major enzyme responsible for the catabolism of poly(ADP-ribose), a reversible covalent-modifier of chromosomal proteins. The protein is found in many tissues and may be subject to proteolysis generating smaller, active products.
Synonyms:	PARG99

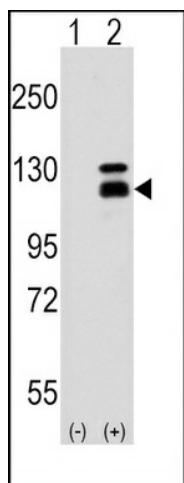


[View online »](#)

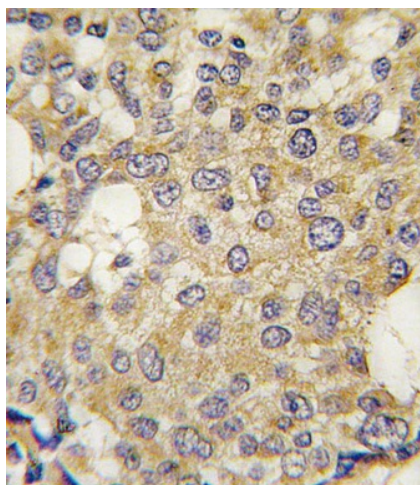
Product images:



Western blot analysis of Parg (arrow) using rabbit polyclonal Parg Antibody (C-term) (Cat.# [TA302286]). 293 cell lysates (2 ug/lane) either nontransfected (Lane 1) or transiently transfected with the Parg gene (Lane 2) (Origene Technologies).



Western blot analysis of Parg Antibody (C-term) in 293 cell line lysates (35ug/lane). Parg (arrow) was detected using the purified Pab.



Formalin-fixed and paraffin-embedded human breast carcinoma tissue reacted with Parg antibody (C-term) (Cat.#[TA302286]), which was peroxidase-conjugated to the secondary antibody, followed by DAB staining. This data demonstrates the use of this antibody for immunohistochemistry; clinical relevance has not been evaluated.