

## Product datasheet for **TA302283S**

### PI 3 Kinase catalytic subunit gamma (PIK3CG) Rabbit Polyclonal Antibody

#### Product data:

Product Type:	Primary Antibodies
Applications:	IHC, WB
Recommended Dilution:	WB: 1:1000, IHC: 1:10~50
Reactivity:	Human
Host:	Rabbit
Isotype:	Ig
Clonality:	Polyclonal
Immunogen:	This PI3CKG antibody is generated from rabbits immunized with a KLH conjugated synthetic peptide between 1041-1070 amino acids from the C-terminal region of human PI3CKG.
Formulation:	Purified polyclonal antibody supplied in PBS with 0.09% (W/V) sodium azide.
Concentration:	lot specific
Purification:	This antibody is prepared by Saturated Ammonium Sulfate (SAS) precipitation followed by dialysis against PBS.
Conjugation:	Unconjugated
Storage:	Store at -20°C as received.
Stability:	Stable for 12 months from date of receipt.
Predicted Protein Size:	126454 Da
Gene Name:	phosphatidylinositol-4,5-bisphosphate 3-kinase catalytic subunit gamma
Database Link:	<a href="#">NP_002640</a> <a href="#">Entrez Gene 5294 Human</a> <a href="#">P48736</a>



[View online »](#)

**Background:**

This gene encodes a protein that belongs to the pi3/pi4-kinase family of proteins. The gene product is an enzyme that phosphorylates phosphoinositides on the 3-hydroxyl group of the inositol ring. It is an important modulator of extracellular signals, including those elicited by E-cadherin-mediated cell-cell adhesion, which plays an important role in maintenance of the structural and functional integrity of epithelia. In addition to its role in promoting assembly of adherens junctions, the protein is thought to play a pivotal role in the regulation of cytotoxicity in NK cells. The gene is located in a commonly deleted segment of chromosome 7 previously identified in myeloid leukemias.

**Synonyms:**

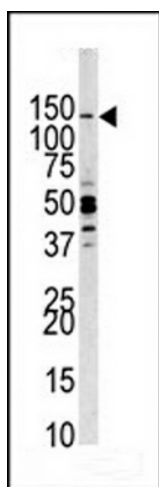
p110gamma; p120-PI3K; PI3CG; PI3K; PI3Kgamma; PIK3

**Protein Families:**

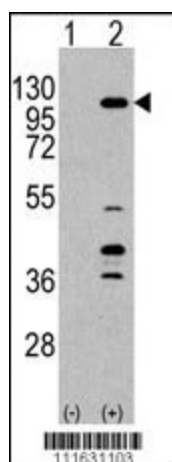
Druggable Genome, ES Cell Differentiation/IPS

**Protein Pathways:**

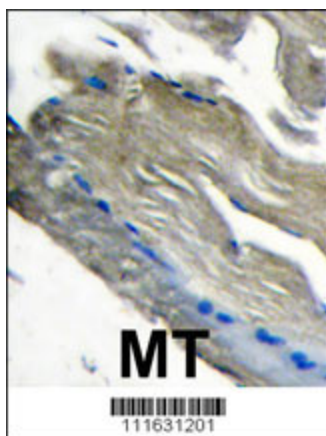
Acute myeloid leukemia, Apoptosis, B cell receptor signaling pathway, Chemokine signaling pathway, Chronic myeloid leukemia, Colorectal cancer, Endometrial cancer, ErbB signaling pathway, Fc epsilon RI signaling pathway, Fc gamma R-mediated phagocytosis, Focal adhesion, Glioma, Inositol phosphate metabolism, Insulin signaling pathway, Jak-STAT signaling pathway, Leukocyte transendothelial migration, Melanoma, mTOR signaling pathway, Natural killer cell mediated cytotoxicity, Neurotrophin signaling pathway, Non-small cell lung cancer, Pancreatic cancer, Pathways in cancer, Phosphatidylinositol signaling system, Progesterone-mediated oocyte maturation, Prostate cancer, Regulation of actin cytoskeleton, Renal cell carcinoma, Small cell lung cancer, T cell receptor signaling pathway, Toll-like receptor signaling pathway, Type II diabetes mellitus, VEGF signaling pathway

**Product images:**


Western blot analysis of anti-PI3CKG Antibody (C-term) Pab (Cat.#[TA302283]) in HeLa cell line lysates (35ug/lane). PI3CKG (arrow) was detected using the purified Pab.



Western blot analysis of anti-PIK3CG Antibody (C-term) Pab (Cat.#[TA302283]) in 293 cell line lysates transiently transfected with the PIK3CG gene (2ug/lane). PIK3CG (arrow) was detected using the purified Pab.



Formalin-fixed and paraffin-embedded human muscle tissue reacted with PI3CKG antibody (C-term) (Cat.#[TA302283]), which was peroxidase-conjugated to the secondary antibody, followed by DAB staining. This data demonstrates the use of this antibody for immunohistochemistry; clinical relevance has not been evaluated.