

Product datasheet for **TA302276S**

PHPT1 Rabbit Polyclonal Antibody

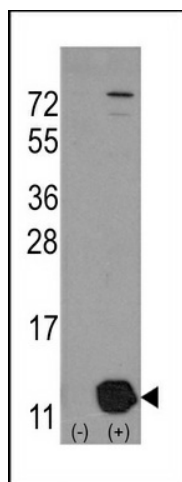
Product data:

Product Type:	Primary Antibodies
Applications:	IHC, WB
Recommended Dilution:	WB: 1:1000, IHC: 1:10~50
Reactivity:	Human
Host:	Rabbit
Isotype:	Ig
Clonality:	Polyclonal
Immunogen:	This PHPT1 antibody is generated from rabbits immunized with a KLH conjugated synthetic peptide between 88-117 amino acids from the C-terminal region of human PHPT1.
Formulation:	Purified polyclonal antibody supplied in PBS with 0.09% (W/V) sodium azide.
Purification:	This antibody is purified through a protein A column, followed by peptide affinity purification.
Conjugation:	Unconjugated
Storage:	Store at -20°C as received.
Stability:	Stable for 12 months from date of receipt.
Predicted Protein Size:	13833 Da
Gene Name:	phosphohistidine phosphatase 1
Database Link:	NP_054891 Entrez Gene 29085 Human Q9NRX4
Background:	PHPT1 is an EDTA-insensitive phosphohistidine phosphatase that catalyzes the dephosphorylation of phosphopeptide I (Ek et al., 2002 [PubMed 12383260]). [supplied by OMIM]
Synonyms:	CGI-202; HEL-S-132P; HSPC141; PHP14
Protein Families:	Druggable Genome
Protein Pathways:	Fructose and mannose metabolism, Metabolic pathways, Riboflavin metabolism, Thiamine metabolism



[View online »](#)

Product images:



Western blot analysis of PHPT1 (arrow) using rabbit polyclonal PHPT1 Antibody (Human C-term) (Cat#.AP2127b).



Formalin-fixed and paraffin-embedded human skeletal muscle tissue reacted with PHPT1 Antibody (N-term) (Cat.#[TA302276]), which was peroxidase-conjugated to the secondary antibody, followed by DAB staining. This data demonstrates the use of this antibody for immunohistochemistry; clinical relevance has not been evaluated.