

## Product datasheet for **TA302272**

### CD14 Rabbit Polyclonal Antibody

#### Product data:

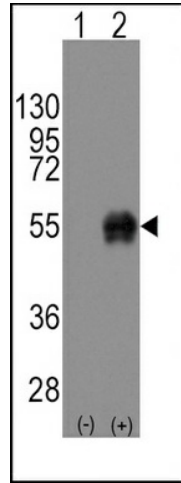
|                         |   |
|-------------------------|---|
| Product Type:           | Primary Antibodies  |
| Applications:           | FC, IHC, WB   |
| Recommended Dilution:   | WB: 1:1000, IHC: 1:10~50, FC: 1:10~50   |
| Reactivity:             | Human   |
| Host:                   | Rabbit  |
| Isotype:                | Ig  |
| Clonality:              | Polyclonal  |
| Immunogen:              | This CD14 antibody is generated from rabbits immunized with a KLH conjugated synthetic peptide between 292-322 amino acids from the C-terminal region of human CD14.          |
| Formulation:            | Purified polyclonal antibody supplied in PBS with 0.09% (W/V) sodium azide.   |
| Concentration:          | lot specific  |
| Purification:           | This antibody is prepared by Saturated Ammonium Sulfate (SAS) precipitation followed by dialysis against PBS.   |
| Conjugation:            | Unconjugated  |
| Storage:                | Store at -20°C as received.   |
| Stability:              | Stable for 12 months from date of receipt.  |
| Predicted Protein Size: | 40076 Da  |
| Gene Name:              | CD14 molecule   |
| Database Link:          | <a href="#">NP_000582</a><br><a href="#">Entrez Gene 929 Human</a><br><a href="#">P08571</a>  |
| Background:             | CD14 is a surface protein preferentially expressed on monocytes/macrophages. It binds lipopolysaccharide binding protein and recently has been shown to bind apoptotic cells. |
| Synonyms:               | CD14 antigen; CD14 molecule; monocyte differentiation antigen CD14  |
| Protein Families:       | Adult stem cells, Druggable Genome, Embryonic stem cells, ES Cell Differentiation/IPS, Transmembrane  |



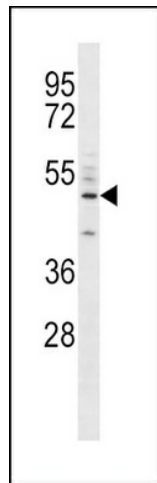
[View online »](#)

**Protein Pathways:**

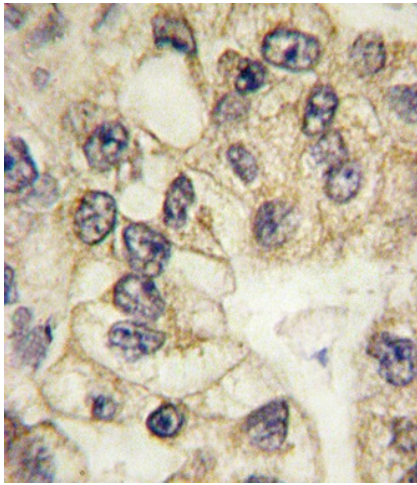
Hematopoietic cell lineage, MAPK signaling pathway, Pathogenic Escherichia coli infection, Regulation of actin cytoskeleton, Toll-like receptor signaling pathway

**Product images:**


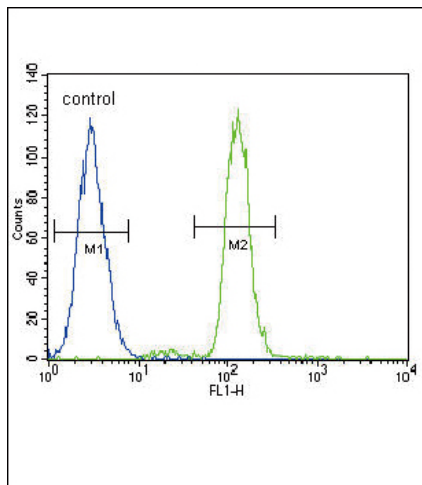
Western blot analysis of CD14 (arrow) using rabbit polyclonal CD14 Antibody (C-term) (Cat.#TA302272). 293 cell lysates (2 ug/lane) either nontransfected (Lane 1) or transiently transfected with the CD14 gene (Lane 2) (Origene Technologies).



CD14 Antibody (C-term) (Cat.#TA302272) western blot analysis in A549 cell line lysates (35ug/lane). This demonstrates the CD14 antibody detected the CD14 protein (arrow).



Formalin-fixed and paraffin-embedded human lung carcinoma tissue reacted with CD14 antibody (C-term) (Cat.#TA302272), which was peroxidase-conjugated to the secondary antibody, followed by DAB staining. This data demonstrates the use of this antibody for immunohistochemistry; clinical relevance has not been evaluated.



CD14 Antibody (C-term) (Cat. #TA302272) flow cytometric analysis of A549 cells (right histogram) compared to a negative control cell (left histogram). FITC-conjugated goat-anti-rabbit secondary antibodies were used for the analysis.