

Product datasheet for **TA302271S**

CD14 Rabbit Polyclonal Antibody

Product data:

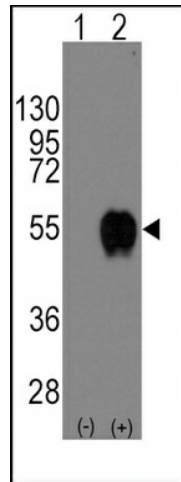
Product Type:	Primary Antibodies
Applications:	FC, IF, IHC, WB
Recommended Dilution:	WB: 1:1000, IHC: 1:10~50, IF: 1:10~50, FC: 1:10~50
Reactivity:	Human
Host:	Rabbit
Isotype:	Ig
Clonality:	Polyclonal
Immunogen:	This CD14 antibody is generated from rabbits immunized with a KLH conjugated synthetic peptide between 54-83 amino acids from the N-terminal region of human CD14.
Formulation:	Purified polyclonal antibody supplied in PBS with 0.09% (W/V) sodium azide.
Concentration:	lot specific
Purification:	This antibody is prepared by Saturated Ammonium Sulfate (SAS) precipitation followed by dialysis against PBS.
Conjugation:	Unconjugated
Storage:	Store at -20°C as received.
Stability:	Stable for 12 months from date of receipt.
Predicted Protein Size:	40076 Da
Gene Name:	CD14 molecule
Database Link:	NP_000582 Entrez Gene 929 Human P08571
Background:	CD14 is a surface protein preferentially expressed on monocytes/macrophages. It binds lipopolysaccharide binding protein and recently has been shown to bind apoptotic cells.
Synonyms:	CD14 antigen; CD14 molecule; monocyte differentiation antigen CD14
Protein Families:	Adult stem cells, Druggable Genome, Embryonic stem cells, ES Cell Differentiation/IPS, Transmembrane



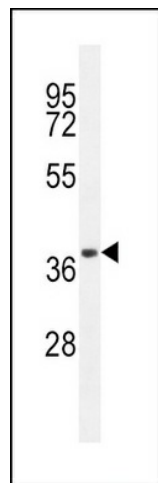
[View online »](#)

Protein Pathways: Hematopoietic cell lineage, MAPK signaling pathway, Pathogenic Escherichia coli infection, Regulation of actin cytoskeleton, Toll-like receptor signaling pathway

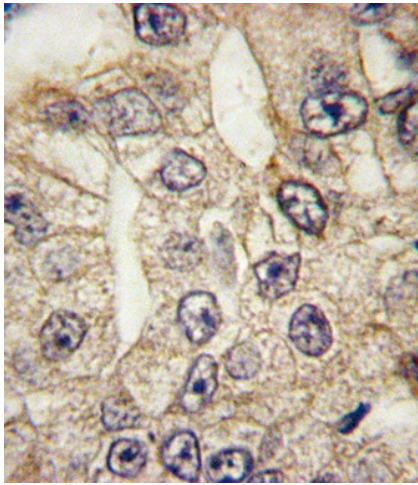
Product images:



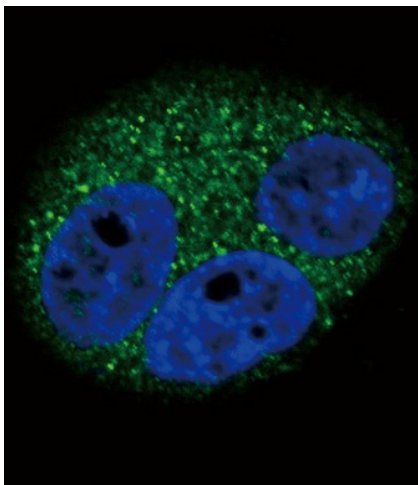
Western blot analysis of CD14 (arrow) using rabbit polyclonal CD14 Antibody (N-term) (Cat.# [TA302271]). 293 cell lysates (2 ug/lane) either nontransfected (Lane 1) or transiently transfected with the CD14 gene (Lane 2) (Origene Technologies).



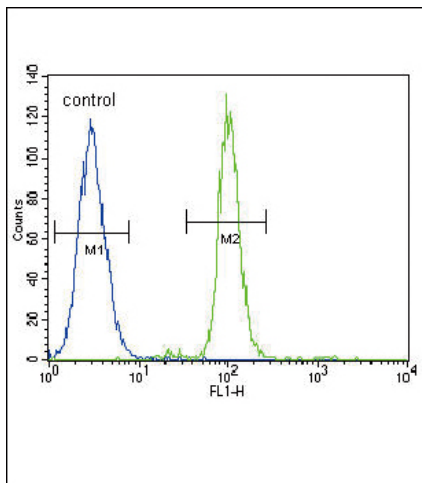
CD14 Antibody (N-term) (Cat.#[TA302271]) western blot analysis in A549 cell line lysates (35ug/lane). This demonstrates the CD14 antibody detected the CD14 protein (arrow).



Formalin-fixed and paraffin-embedded human lung carcinoma tissue reacted with CD14 antibody (N-term) (Cat.#[TA302271]), which was peroxidase-conjugated to the secondary antibody, followed by DAB staining. This data demonstrates the use of this antibody for immunohistochemistry; clinical relevance has not been evaluated.



Confocal immunofluorescent analysis of CD14 Antibody (N-term) (Cat#[TA302271]) with A549 cell followed by Alexa Fluor 488-conjugated goat anti-rabbit IgG (green).DAPI was used to stain the cell nuclear (blue).



CD14 Antibody (N-term) (Cat. #[TA302271]) flow cytometric analysis of A549 cells (right histogram) compared to a negative control cell (left histogram).FITC-conjugated goat-anti-rabbit secondary antibodies were used for the analysis.