

Product datasheet for **TA302261S**

Prohibitin (PHB) Rabbit Polyclonal Antibody

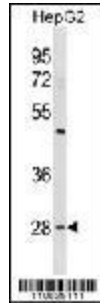
Product data:

| | |
|-------------------------|--|
| Product Type: | Primary Antibodies |
| Applications: | FC, IHC, WB |
| Recommended Dilution: | WB: 1:1000, IHC: 1:50~100, FC: 1:10~50 |
| Reactivity: | Human (Predicted: Bovine, Chicken) |
| Host: | Rabbit |
| Isotype: | Ig |
| Clonality: | Polyclonal |
| Immunogen: | This Prohibitin (PHB1) antibody is generated from rabbits immunized with a KLH conjugated synthetic peptide between 92-121 amino acids from the N-terminal region of human Prohibitin (PHB1). |
| Formulation: | Purified polyclonal antibody supplied in PBS with 0.09% (W/V) sodium azide. |
| Concentration: | lot specific |
| Purification: | This antibody is purified through a protein A column, followed by peptide affinity purification. |
| Conjugation: | Unconjugated |
| Storage: | Store at -20°C as received. |
| Stability: | Stable for 12 months from date of receipt. |
| Predicted Protein Size: | 29804 Da |
| Gene Name: | prohibitin |
| Database Link: | NP_002625 Entrez Gene 5245 Human P35232 |
| Background: | Prohibitin is an evolutionarily conserved protein that is ubiquitously expressed. It is thought to be a negative regulator of cell proliferation and may be a tumor suppressor. Mutations have been linked to sporadic breast cancer. Prohibitin is expressed as two transcripts with varying lengths of 3' untranslated region. |
| Synonyms: | HEL-215; HEL-S-54e; PHB1 |
| Protein Families: | Druggable Genome, Stem cell - Pluripotency, Transcription Factors |

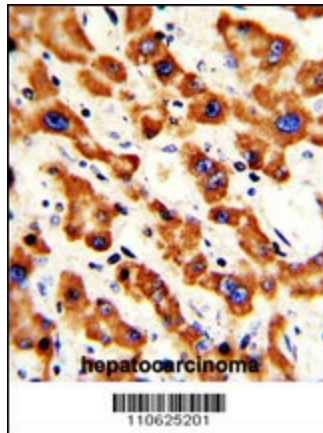


[View online »](#)

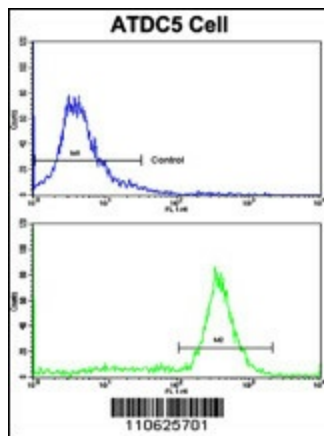
Product images:



PHB1 Antibody (Human N-term) (Cat. # [TA302261]) western blot analysis in HepG2 cell line lysates (35ug/lane). This demonstrates the PHB1 antibody detected the PHB1 protein (arrow).



Formalin-fixed and paraffin-embedded human hepatocarcinoma with Prohibitin (PHB1) Antibody (N-term), which was peroxidase-conjugated to the secondary antibody, followed by DAB staining. This data demonstrates the use of this antibody for immunohistochemistry; clinical relevance has not been evaluated.



Flow cytometric analysis of ATDC5 cells using PHB1 Antibody (N-term) (bottom histogram) compared to a negative control cell (top histogram). FITC-conjugated goat-anti-rabbit secondary antibodies were used for the analysis.