

## Product datasheet for TA302261

### Prohibitin (PHB) Rabbit Polyclonal Antibody

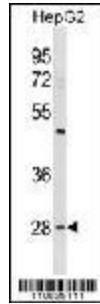
#### Product data:

Product Type:	Primary Antibodies
Applications:	FC, IHC, WB
Recommended Dilution:	WB: 1:1000, IHC: 1:50~100, FC: 1:10~50
Reactivity:	Human (Predicted: Bovine, Chicken)
Host:	Rabbit
Isotype:	Ig
Clonality:	Polyclonal
Immunogen:	This Prohibitin (PHB1) antibody is generated from rabbits immunized with a KLH conjugated synthetic peptide between 92-121 amino acids from the N-terminal region of human Prohibitin (PHB1).
Formulation:	Purified polyclonal antibody supplied in PBS with 0.09% (W/V) sodium azide.
Concentration:	lot specific
Purification:	This antibody is purified through a protein A column, followed by peptide affinity purification.
Storage:	Store at -20°C as received.
Stability:	Stable for 12 months from date of receipt.
Predicted Protein Size:	29804 Da
Gene Name:	prohibitin
Database Link:	<a href="#">NP_002625 Entrez Gene 5245 Human</a>
Background:	Prohibitin is an evolutionarily conserved protein that is ubiquitously expressed. It is thought to be a negative regulator of cell proliferation and may be a tumor suppressor. Mutations have been linked to sporadic breast cancer. Prohibitin is expressed as two transcripts with varying lengths of 3' untranslated region.
Synonyms:	HEL-215; HEL-S-54e; PHB1
Protein Families:	Druggable Genome, Stem cell - Pluripotency, Transcription Factors

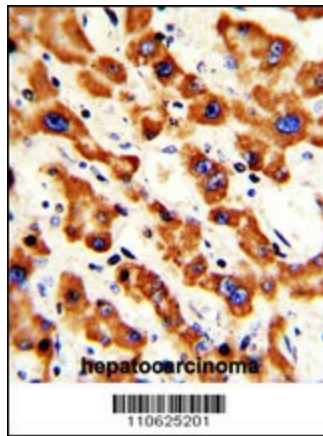


[View online »](#)

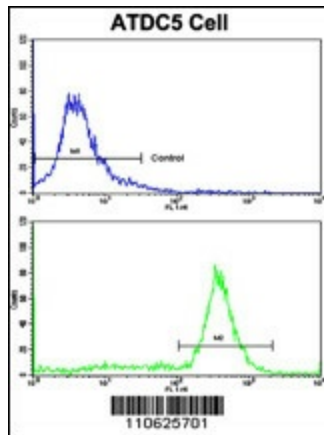
Product images:



PHB1 Antibody (Human N-term) (Cat. #TA302261) western blot analysis in HepG2 cell line lysates (35ug/lane). This demonstrates the PHB1 antibody detected the PHB1 protein (arrow).



Formalin-fixed and paraffin-embedded human hepatocarcinoma with Prohibitin (PHB1) Antibody (N-term), which was peroxidase-conjugated to the secondary antibody, followed by DAB staining. This data demonstrates the use of this antibody for immunohistochemistry; clinical relevance has not been evaluated.



Flow cytometric analysis of ATDC5 cells using PHB1 Antibody (N-term) (bottom histogram) compared to a negative control cell (top histogram). FITC-conjugated goat-anti-rabbit secondary antibodies were used for the analysis.