

Product datasheet for **TA302260S**

Prohibitin (PHB) Rabbit Polyclonal Antibody

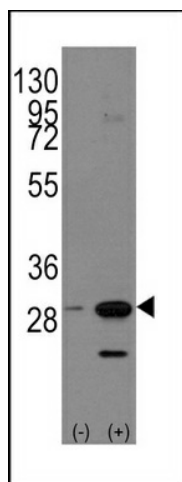
Product data:

Product Type:	Primary Antibodies
Applications:	WB
Recommended Dilution:	WB: 1:1000
Reactivity:	Human (Predicted: Mouse, Rat, Bovine)
Host:	Rabbit
Isotype:	Ig
Clonality:	Polyclonal
Immunogen:	This PHB1 antibody is generated from rabbits immunized with a KLH conjugated synthetic peptide between 182-211 amino acids from the C-terminal region of human PHB1.
Formulation:	Purified polyclonal antibody supplied in PBS with 0.09% (W/V) sodium azide.
Concentration:	lot specific
Purification:	This antibody is purified through a protein A column, followed by peptide affinity purification.
Conjugation:	Unconjugated
Storage:	Store at -20°C as received.
Stability:	Stable for 12 months from date of receipt.
Predicted Protein Size:	29804 Da
Gene Name:	prohibitin
Database Link:	NP_002625 Entrez Gene 18673 Mouse Entrez Gene 25344 Rat Entrez Gene 5245 Human P35232
Background:	Prohibitin is an evolutionarily conserved protein that is ubiquitously expressed. It is thought to be a negative regulator of cell proliferation and may be a tumor suppressor. Mutations have been linked to sporadic breast cancer. Prohibitin is expressed as two transcripts with varying lengths of 3' untranslated region.
Synonyms:	HEL-215; HEL-S-54e; PHB1
Protein Families:	Druggable Genome, Stem cell - Pluripotency, Transcription Factors



[View online »](#)

Product images:



Western blot analysis of PHB1 (arrow) using rabbit polyclonal PHB1 Antibody (Human C-term) (Cat.#[TA302260]).