

Product datasheet for **TA302242S**

FAU Rabbit Polyclonal Antibody

Product data:

Product Type:	Primary Antibodies
Applications:	IHC, WB
Recommended Dilution:	WB: 1:1000, IHC: 1:50~100
Reactivity:	Human
Host:	Rabbit
Isotype:	Ig
Clonality:	Polyclonal
Immunogen:	This FAU antibody is generated from rabbits immunized with a KLH conjugated synthetic peptide between 1-30 amino acids from the N-terminal region of human FAU.
Formulation:	Purified polyclonal antibody supplied in PBS with 0.09% (W/V) sodium azide.
Concentration:	lot specific
Purification:	This antibody is prepared by Saturated Ammonium Sulfate (SAS) precipitation followed by dialysis against PBS.
Conjugation:	Unconjugated
Storage:	Store at -20°C as received.
Stability:	Stable for 12 months from date of receipt.
Predicted Protein Size:	14389 Da
Gene Name:	Finkel-Biskis-Reilly murine sarcoma virus (FBR-MuSV) ubiquitously expressed
Database Link:	NP_001988 Entrez Gene 2197 Human P35544
Background:	FUBI is the cellular homolog of the fox sequence in the Finkel-Biskis-Reilly murine sarcoma virus (FBR-MuSV). It is a fusion protein consisting of the ubiquitin-like protein fubi at the N terminus and ribosomal protein S30 at the C terminus. It has been proposed that the fusion protein is post-translationally processed to generate free fubi and free ribosomal protein S30. Fubi is a member of the ubiquitin family, and ribosomal protein S30 belongs to the S30E family of ribosomal proteins. Whereas the function of fubi is currently unknown, ribosomal protein S30 is a component of the 40S subunit of the cytoplasmic ribosome.

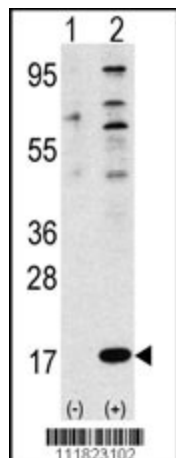

[View online »](#)

Synonyms: asr1; FAU1; Fub1; Fubi; MNSFbeta; RPS30; S30

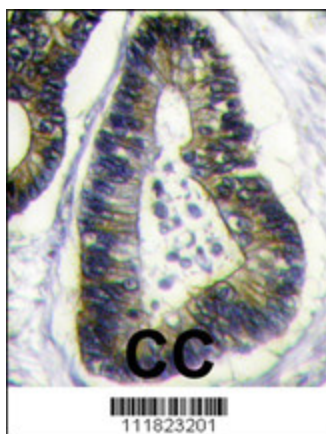
Protein Families: Druggable Genome

Protein Pathways: Ribosome

Product images:



Western blot analysis of FUBI Antibody (N-term) polyclonal antibody (Cat.#[TA302242]) (arrow). 293 cell lysates (2 ug/lane) either nontransfected (Lane 1) or transiently transfected with the FUBI gene (Lane 2) (Origene Technologies).



Formalin-fixed and paraffin-embedded human colon carcinoma reacted with FUBI Antibody (N-term) (Cat.#[TA302242]), which was peroxidase-conjugated to the secondary antibody, followed by DAB staining. This data demonstrates the use of this antibody for immunohistochemistry; clinical relevance has not been evaluated.