

## Product datasheet for **TA302241S**

### FAU Rabbit Polyclonal Antibody

#### Product data:

Product Type:	Primary Antibodies
Applications:	IHC, WB
Recommended Dilution:	WB: 1:1000, IHC: 1:50~100
Reactivity:	Human (Predicted: Mouse, Rat, Bovine, Hamster, Pig)
Host:	Rabbit
Isotype:	Ig
Clonality:	Polyclonal
Immunogen:	This FAU antibody is generated from rabbits immunized with a KLH conjugated synthetic peptide between 29-59 amino acids from the C-terminal region of human FAU.
Formulation:	Purified polyclonal antibody supplied in PBS with 0.09% (W/V) sodium azide.
Concentration:	lot specific
Purification:	This antibody is prepared by Saturated Ammonium Sulfate (SAS) precipitation followed by dialysis against PBS.
Conjugation:	Unconjugated
Storage:	Store at -20°C as received.
Stability:	Stable for 12 months from date of receipt.
Predicted Protein Size:	14630 Da
Gene Name:	Finkel-Biskis-Reilly murine sarcoma virus (FBR-MuSV) ubiquitously expressed
Database Link:	<a href="#">NP_001988</a> <a href="#">Entrez Gene 14109 Mouse</a> <a href="#">Entrez Gene 29752 Rat</a> <a href="#">Entrez Gene 2197 Human</a> <a href="#">P35544</a>



[View online »](#)

**Background:**

This gene is the cellular homolog of the fox sequence in the Finkel-Biskis-Reilly murine sarcoma virus (FBR-MuSV). It encodes a fusion protein consisting of the ubiquitin-like protein fubi at the N terminus and ribosomal protein S30 at the C terminus. It has been proposed that the fusion protein is post-translationally processed to generate free fubi and free ribosomal protein S30. Fubi is a member of the ubiquitin family, and ribosomal protein S30 belongs to the S30E family of ribosomal proteins. Whereas the function of fubi is currently unknown, ribosomal protein S30 is a component of the 40S subunit of the cytoplasmic ribosome. Pseudogenes derived from this gene are present in the genome. Similar to ribosomal protein S30, ribosomal proteins S27a and L40 are synthesized as fusion proteins with ubiquitin.

**Synonyms:**

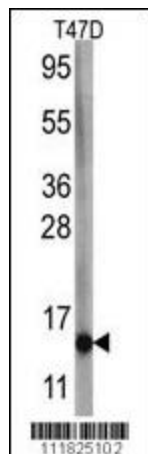
asr1; FAU1; Fub1; Fubi; MNSFbeta; RPS30; S30

**Protein Families:**

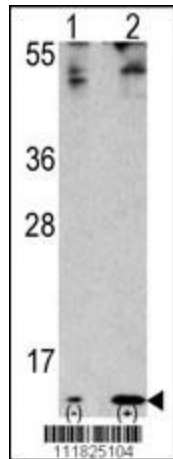
Druggable Genome

**Protein Pathways:**

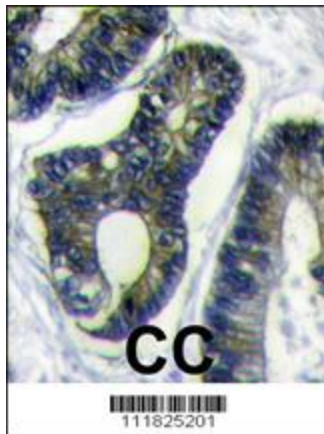
Ribosome

**Product images:**

Western blot analysis of anti-FUBI C-term Pab (Cat.#[TA302241]) in HeLa and T47D cell line lysates. FUBI (arrow) was detected using the purified Pab.



Western blot analysis of anti-hFUBI C-term Pab (Cat.#[TA302241]) in 293 cell line lysates transiently transfected with the FAU gene (2ug/lane). FUBI (arrow) was detected using the purified Pab.



Formalin-fixed and paraffin-embedded human colon carcinoma reacted with FUBI Antibody (C-term) (Cat.#[TA302241]), which was peroxidase-conjugated to the secondary antibody, followed by DAB staining. This data demonstrates the use of this antibody for immunohistochemistry; clinical relevance has not been evaluated.