

Product datasheet for **TA302236S**

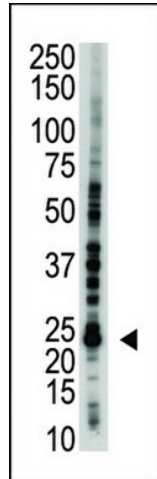
UBE2S Rabbit Polyclonal Antibody

Product data:

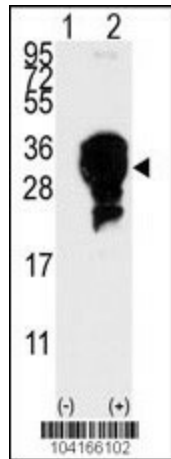
Product Type:	Primary Antibodies
Applications:	IHC, WB
Recommended Dilution:	WB: 1:1000, IHC: 1:50~100
Reactivity:	Human (Predicted: Bovine, Xenopus)
Host:	Rabbit
Isotype:	Ig
Clonality:	Polyclonal
Immunogen:	This E2EPF antibody is generated from rabbits immunized with a KLH conjugated synthetic peptide between 192-222 amino acids from the C-terminal region of human E2EPF.
Formulation:	Purified polyclonal antibody supplied in PBS with 0.09% (W/V) sodium azide.
Concentration:	lot specific
Purification:	This antibody is prepared by Saturated Ammonium Sulfate (SAS) precipitation followed by dialysis against PBS.
Conjugation:	Unconjugated
Storage:	Store at -20°C as received.
Stability:	Stable for 12 months from date of receipt.
Predicted Protein Size:	23845 Da
Gene Name:	ubiquitin conjugating enzyme E2 S
Database Link:	NP_055316 Entrez Gene 27338 Human Q16763
Background:	This gene encodes a member of the ubiquitin-conjugating enzyme family. The encoded protein is able to form a thiol ester linkage with ubiquitin in a ubiquitin activating enzyme-dependent manner, a characteristic property of ubiquitin carrier proteins.
Synonyms:	E2-EPF; E2EPF; EPF5
Protein Families:	Druggable Genome
Protein Pathways:	Ubiquitin mediated proteolysis



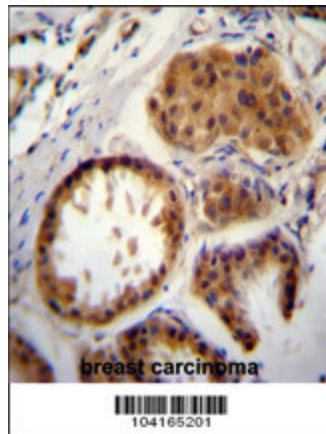
[View online »](#)

Product images:


The anti-E2EPF Pab (Cat. #TA302236J) is used in Western blot to detect E2EPF in Jurkat cell lysate.



Western blot analysis of E2EPF (arrow) using E2EPF Antibody (C-term) (Cat.#TA302236J). 293 cell lysates (2 ug/lane) either nontransfected (Lane 1) or transiently transfected with the E2EPF gene (Lane 2) (Origene Technologies).



E2EPF Antibody (C-term) (Cat. # TA302236J) immunohistochemistry analysis in formalin fixed and paraffin embedded human breast carcinoma followed by peroxidase conjugation of the secondary antibody and DAB staining. This data demonstrates the use of E2EPF Antibody (C-term) for immunohistochemistry. Clinical relevance has not been evaluated.