

Product datasheet for **TA302232S**

ATF 4 (ATF4) Rabbit Polyclonal Antibody

Product data:

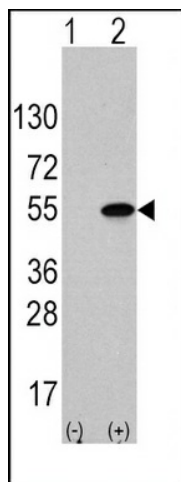
Product Type:	Primary Antibodies
Applications:	WB
Recommended Dilution:	WB: 1:1000
Reactivity:	Human
Host:	Rabbit
Isotype:	Ig
Clonality:	Polyclonal
Immunogen:	This ATF4 antibody is generated from rabbits immunized with a KLH conjugated synthetic peptide between 220-252 amino acids from human ATF4.
Formulation:	Purified polyclonal antibody supplied in PBS with 0.09% (W/V) sodium azide.
Purification:	This antibody is purified through a protein A column, followed by peptide affinity purification.
Conjugation:	Unconjugated
Storage:	Store at -20°C as received.
Stability:	Stable for 12 months from date of receipt.
Predicted Protein Size:	38459 Da
Gene Name:	activating transcription factor 4
Database Link:	NP_001666 Entrez Gene 468 Human P18848
Background:	ATF4 is a transcription factor that was originally identified as a widely expressed mammalian DNA binding protein that could bind a tax-responsive enhancer element in the LTR of HTLV-1. The encoded protein was also isolated and characterized as the cAMP-response element binding protein 2 (CREB-2). ATF4 belongs to a family of DNA-binding proteins that includes the AP-1 family of transcription factors, cAMP-response element binding proteins (CREBs) and CREB-like proteins. These transcription factors share a leucine zipper region that is involved in protein-protein interactions, located C-terminal to a stretch of basic amino acids that functions as a DNA binding domain.
Synonyms:	CREB-2; CREB2; TAXREB67; TXREB


[View online »](#)

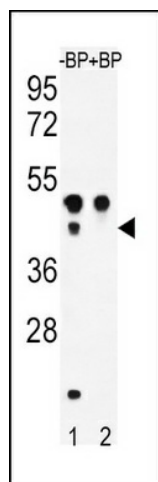
Protein Families: Transcription Factors

Protein Pathways: GnRH signaling pathway, Long-term potentiation, MAPK signaling pathway, Neurotrophin signaling pathway, Prostate cancer

Product images:



Western blot analysis of ATF4 (arrow) using rabbit anti-ATF4 Antibody (S245) (Cat. #TA302232). 293 cell lysates (2 ug/lane) either nontransfected (Lane 1) or transiently transfected with the ATF4 gene (Lane 2) (Origene Technologies).



Western blot analysis of ATF4 Antibody (S245) Pab (Cat. #TA302232) pre-incubated without (lane 1) and with (lane 2) blocking peptide in WiDr cell line lysate. ATF4 Antibody (pS245) (arrow) was detected using the purified Pab.