

Product datasheet for **TA302232**

ATF 4 (ATF4) Rabbit Polyclonal Antibody

Product data:

| | |
|-------------------------|---|
| Product Type: | Primary Antibodies |
| Applications: | WB |
| Recommended Dilution: | WB: 1:1000 |
| Reactivity: | Human |
| Host: | Rabbit |
| Isotype: | Ig |
| Clonality: | Polyclonal |
| Immunogen: | This ATF4 antibody is generated from rabbits immunized with a KLH conjugated synthetic peptide between 220-252 amino acids from human ATF4. |
| Formulation: | Purified polyclonal antibody supplied in PBS with 0.09% (W/V) sodium azide. |
| Purification: | This antibody is purified through a protein A column, followed by peptide affinity purification. |
| Conjugation: | Unconjugated |
| Storage: | Store at -20°C as received. |
| Stability: | Stable for 12 months from date of receipt. |
| Predicted Protein Size: | 38459 Da |
| Gene Name: | activating transcription factor 4 |
| Database Link: | NP_001666 Entrez Gene 468 Human P18848 |
| Background: | ATF4 is a transcription factor that was originally identified as a widely expressed mammalian DNA binding protein that could bind a tax-responsive enhancer element in the LTR of HTLV-1. The encoded protein was also isolated and characterized as the cAMP-response element binding protein 2 (CREB-2). ATF4 belongs to a family of DNA-binding proteins that includes the AP-1 family of transcription factors, cAMP-response element binding proteins (CREBs) and CREB-like proteins. These transcription factors share a leucine zipper region that is involved in protein-protein interactions, located C-terminal to a stretch of basic amino acids that functions as a DNA binding domain. |
| Synonyms: | CREB-2; CREB2; TAXREB67; TXREB |

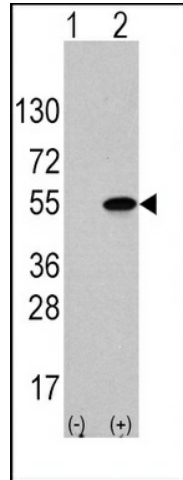


[View online »](#)

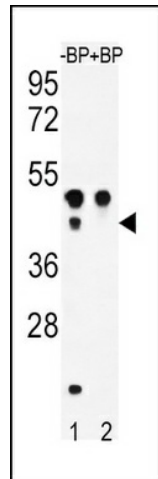
Protein Families: Transcription Factors

Protein Pathways: GnRH signaling pathway, Long-term potentiation, MAPK signaling pathway, Neurotrophin signaling pathway, Prostate cancer

Product images:



Western blot analysis of ATF4 (arrow) using rabbit anti-ATF4 Antibody (S245) (Cat. #TA302232). 293 cell lysates (2 ug/lane) either nontransfected (Lane 1) or transiently transfected with the ATF4 gene (Lane 2) (Origene Technologies).



Western blot analysis of ATF4 Antibody (S245) Pab (Cat. #TA302232) pre-incubated without (lane 1) and with (lane 2) blocking peptide in WiDr cell line lysate. ATF4 Antibody (pS245) (arrow) was detected using the purified Pab.