

Product datasheet for **TA302230**

AKT3 Rabbit Polyclonal Antibody

Product data:

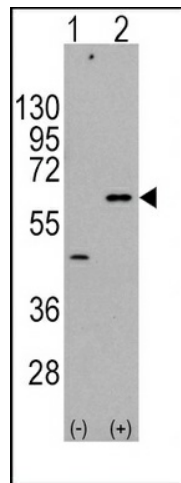
Product Type:	Primary Antibodies
Applications:	WB
Recommended Dilution:	WB: 1:1000
Reactivity:	Human (Predicted: Mouse, Rat)
Host:	Rabbit
Isotype:	Ig
Clonality:	Polyclonal
Immunogen:	This AKT3 antibody is generated from rabbits immunized with a KLH conjugated synthetic peptide between 450-479 amino acids from human AKT3.
Formulation:	Purified polyclonal antibody supplied in PBS with 0.09% (W/V) sodium azide.
Concentration:	lot specific
Purification:	This antibody is purified through a protein A column, followed by peptide affinity purification.
Conjugation:	Unconjugated
Storage:	Store at -20°C as received.
Stability:	Stable for 12 months from date of receipt.
Predicted Protein Size:	55775 Da
Gene Name:	AKT serine/threonine kinase 3
Database Link:	NP_005456 Entrez Gene 23797 Mouse Entrez Gene 29414 Rat Entrez Gene 10000 Human Q9Y243
Background:	AKT3 is a member of the AKT, also called PKB, serine/threonine protein kinase family. AKT kinases are known to be regulators of cell signaling in response to insulin and growth factors. They are involved in a wide variety of biological processes including cell proliferation, differentiation, apoptosis, tumorigenesis, as well as glycogen synthesis and glucose uptake. This kinase has been shown to be stimulated by platelet-derived growth factor (PDGF), insulin, and insulin-like growth factor 1 (IGF1).
Synonyms:	MPPH; MPPH2; PKB-GAMMA; PKBG; PRKBG; RAC-gamma; RAC-PK-gamma; STK-2



[View online »](#)

Protein Families: Druggable Genome, ES Cell Differentiation/IPS, Protein Kinase

Protein Pathways: Acute myeloid leukemia, Adipocytokine signaling pathway, Apoptosis, B cell receptor signaling pathway, Chemokine signaling pathway, Chronic myeloid leukemia, Colorectal cancer, Endometrial cancer, ErbB signaling pathway, Fc epsilon RI signaling pathway, Fc gamma R-mediated phagocytosis, Focal adhesion, Glioma, Insulin signaling pathway, Jak-STAT signaling pathway, MAPK signaling pathway, Melanoma, mTOR signaling pathway, Neurotrophin signaling pathway, Non-small cell lung cancer, Pancreatic cancer, Pathways in cancer, Progesterone-mediated oocyte maturation, Prostate cancer, Renal cell carcinoma, Small cell lung cancer, T cell receptor signaling pathway, Tight junction, Toll-like receptor signaling pathway, VEGF signaling pathway

Product images:

Western blot analysis of AKT3 (arrow) using rabbit polyclonal AKT3 Antibody (S472) (Cat.#TA302230). 293 cell lysates (2 ug/lane) either nontransfected (Lane 1) or transiently transfected with the AKT3 gene (Lane 2) (Origene Technologies).