

Product datasheet for **TA302227S**

E Cadherin (CDH1) Rabbit Polyclonal Antibody

Product data:

Product Type:	Primary Antibodies
Applications:	FC, WB
Recommended Dilution:	WB: 1:1000, FC: 1:10~50
Reactivity:	Human
Host:	Rabbit
Isotype:	Ig
Clonality:	Polyclonal
Immunogen:	This E Cadherin (CDH1) antibody is generated from rabbits immunized with a KLH conjugated synthetic peptide between 160-189 amino acids from the N-terminal region of human E Cadherin (CDH1).
Formulation:	Purified polyclonal antibody supplied in PBS with 0.09% (W/V) sodium azide.
Concentration:	lot specific
Purification:	This antibody is prepared by Saturated Ammonium Sulfate (SAS) precipitation followed by dialysis against PBS.
Conjugation:	Unconjugated
Storage:	Store at -20°C as received.
Stability:	Stable for 12 months from date of receipt.
Predicted Protein Size:	97456 Da
Gene Name:	cadherin 1
Database Link:	NP_004351 Entrez Gene 999 Human P12830



[View online »](#)

Background:

CDH1 is a classical cadherin from the cadherin superfamily. This protein is a calcium dependent cell-cell adhesion glycoprotein comprised of five extracellular cadherin repeats, a transmembrane region and a highly conserved cytoplasmic tail. Mutations are correlated with gastric, breast, colorectal, thyroid and ovarian cancer. Loss of function is thought to contribute to progression in cancer by increasing proliferation, invasion, and/or metastasis. The ectodomain of this protein mediates bacterial adhesion to mammalian cells and the cytoplasmic domain is required for internalization.

Synonyms:

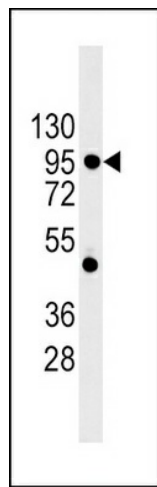
Arc-1; CD324; CDHE; ECAD; LCAM; UVO

Protein Families:

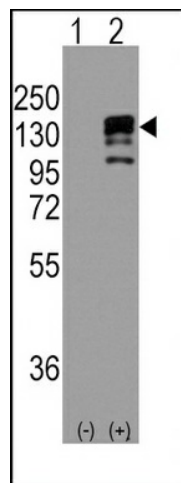
Druggable Genome, ES Cell Differentiation/IPS, Transmembrane

Protein Pathways:

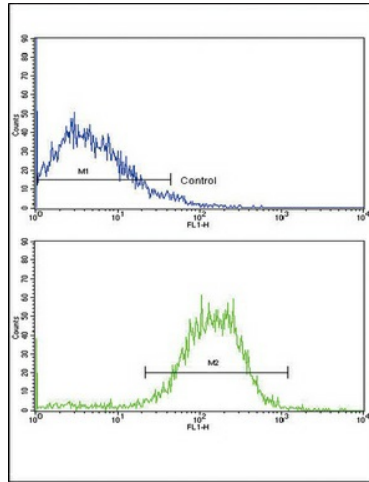
Adherens junction, Bladder cancer, Cell adhesion molecules (CAMs), Endometrial cancer, Melanoma, Pathogenic Escherichia coli infection, Pathways in cancer, Thyroid cancer

Product images:


Western blot analysis of CDH1 Antibody (N-term) (Cat.#[TA302227]) in 293 cell line lysates (35ug/lane). CDH1 (arrow) was detected using the purified Pab.



Western blot analysis of CDH1 (arrow) using rabbit polyclonal CDH1 Antibody (N-term) (Cat.# [TA302227]).293 cell lysates (2 ug/lane) either nontransfected (Lane 1) or transiently transfected with the CDH1 gene (Lane 2) (Origene Technologies).



Flow cytometric analysis of NCI-H292 cells using E Cadherin (CDH1) Antibody (N-term) (bottom histogram) compared to a negative control cell (top histogram). FITC-conjugated goat-anti-rabbit secondary antibodies were used for the analysis.