

Product datasheet for **TA302225S**

TRPM8 Rabbit Polyclonal Antibody

Product data:

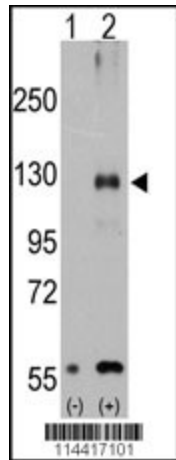
Product Type:	Primary Antibodies
Applications:	IHC, WB
Recommended Dilution:	WB: 1:1000, IHC: 1:10~50
Reactivity:	Human
Host:	Rabbit
Isotype:	Ig
Clonality:	Polyclonal
Immunogen:	This TRPM8 antibody is generated from rabbits immunized with a KLH conjugated synthetic peptide between 521-552 amino acids from the Central region of human TRPM8.
Formulation:	Purified polyclonal antibody supplied in PBS with 0.09% (W/V) sodium azide.
Concentration:	lot specific
Purification:	This antibody is prepared by Saturated Ammonium Sulfate (SAS) precipitation followed by dialysis against PBS.
Conjugation:	Unconjugated
Storage:	Store at -20°C as received.
Stability:	Stable for 12 months from date of receipt.
Predicted Protein Size:	127685 Da
Gene Name:	transient receptor potential cation channel subfamily M member 8
Database Link:	NP_076985 Entrez Gene 79054 Human Q7Z2W7
Background:	TRPM8 is a receptor-activated non-selective cation channel involved in detection of sensations such as coolness, by being activated by cold temperature below 25 degrees Celsius. It is activated by icilin, eucalyptol, menthol, cold and modulation of intracellular pH and involved in menthol sensation. It is permeable for monovalent cations sodium, potassium, and cesium and divalent cation calcium.
Synonyms:	LTRPC6; TRPP8



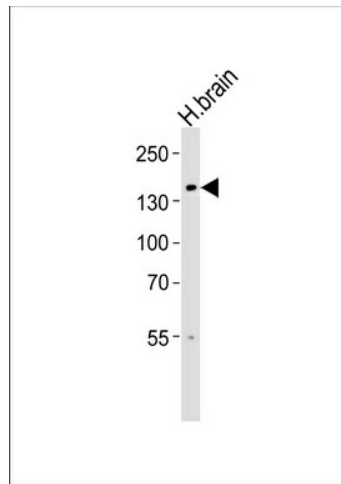
[View online »](#)

Protein Families: Druggable Genome, Ion Channels: Transient receptor potential, Transmembrane

Product images:



Western blot analysis of TRPM8 (arrow) using rabbit polyclonal TRPM8 Antibody (Center R536) (Cat.#[TA302225S]).293 cell lysates (2 ug/lane) either nontransfected (Lane 1) or transiently transfected with the TRPM8 gene (Lane 2) (Origene Technologies).



Western blot analysis of lysate from human brain tissue lysate, using TRPM8 Antibody (Center R536) (Cat. #[TA302225]). [TA302225] was diluted at 1:1000. A goat anti-rabbit IgG H&L (HRP) at 1:5000 dilution was used as the secondary antibody. Lysate at 35ug.

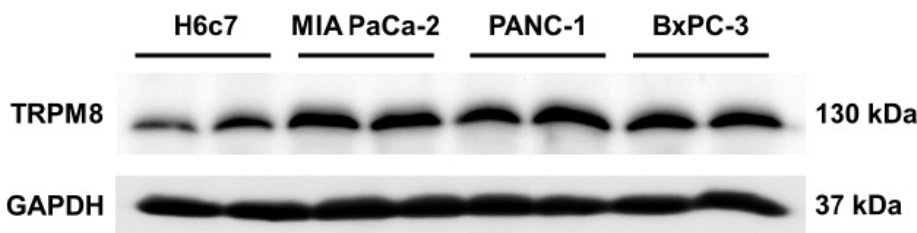
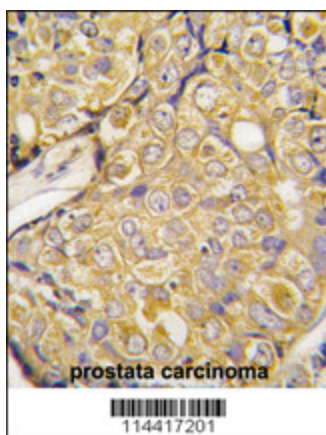


Figure from citation: Western Blot of TRPM8 protein level by using anti-TRPM8 antibody in human pancreatic adenocarcinoma cell lines. Dilution: 1:750 [View Citation](#)



Formalin-fixed and paraffin-embedded human prostata carcinoma tissue reacted with TRPM8 antibody (Center R536) (Cat.#[TA302225]), which was peroxidase-conjugated to the secondary antibody, followed by DAB staining. This data demonstrates the use of this antibody for immunohistochemistry; clinical relevance has not been evaluated.