

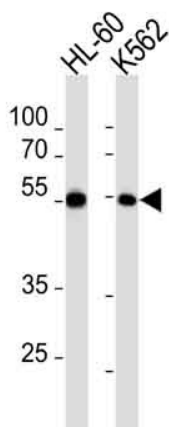
## Product datasheet for TA302220

### MEF2C Rabbit Polyclonal Antibody

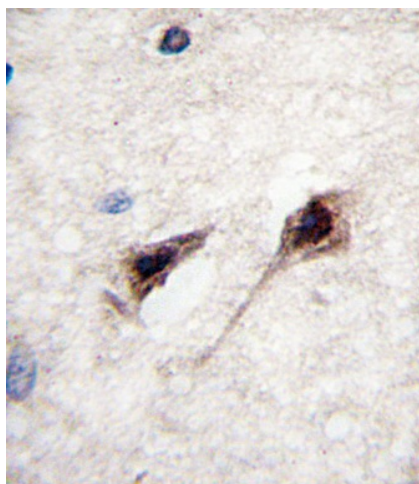
#### Product data:

Product Type:	Primary Antibodies
Applications:	IF, IHC, WB
Recommended Dilution:	WB: 1:1000, IF: 1:10~50, IHC: 1:10~50
Reactivity:	Human (Predicted: Pig)
Host:	Rabbit
Isotype:	Ig
Clonality:	Polyclonal
Immunogen:	This MEF2C antibody is generated from rabbits immunized with a KLH conjugated synthetic peptide between 365-394 amino acids from human MEF2C.
Formulation:	Purified polyclonal antibody supplied in PBS with 0.09% (W/V) sodium azide.
Purification:	This antibody is purified through a protein A column, followed by peptide affinity purification.
Conjugation:	Unconjugated
Storage:	Store at -20°C as received.
Stability:	Stable for 12 months from date of receipt.
Predicted Protein Size:	51090 Da
Gene Name:	myocyte enhancer factor 2C
Database Link:	<a href="#">NP_002388</a> <a href="#">Entrez Gene 4208 Human</a> <a href="#">Q06413</a>
Background:	MEF2C is a transcription activator which binds specifically to the MEF2 element present in the regulatory regions of many muscle-specific genes. This protein controls cardiac morphogenesis and myogenesis, and is also involved in vascular development. It may also be involved in neurogenesis and in the development of cortical architecture.
Synonyms:	C5DELq14.3; DEL5q14.3
Protein Families:	Transcription Factors
Protein Pathways:	MAPK signaling pathway

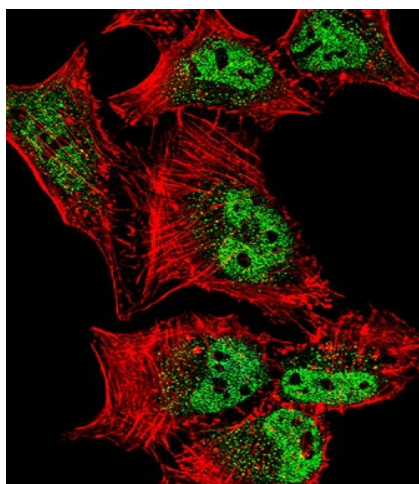

[View online »](#)

**Product images:**


MEF2C Antibody (pS387) (Cat. #TA302220) western blot analysis in HL-60, K562 cell line lysates (35ug/lane). This demonstrates the MEF2C antibody detected the MEF2C protein (arrow).



Formalin-fixed and paraffin-embedded human brain tissue reacted with MEF2C Antibody (S387) (Cat.#TA302220), which was peroxidase-conjugated to the secondary antibody, followed by DAB staining. This data demonstrates the use of this antibody for immunohistochemistry; clinical relevance has not been evaluated.



IF image of HeLa cell stained with MEF2C Antibody (S387) (Cat#TA302220). HeLa cells were incubated with MEF2C primary antibody (1:25, 1 h at 37°C). For secondary antibody, Alexa Fluor® 488 conjugated donkey anti-rabbit antibody (green) was used (1:400). Cytoplasmic actin was counterstained with Alexa Fluor® 555 (red) conjugated Phalloidin (7 units/ml). Nuclei were counterstained with DAPI (blue). MEF2C immunoreactivity is localized to vesicles and Nucleus significantly.

