

Product datasheet for **TA302217S**

CASK Rabbit Polyclonal Antibody

Product data:

Product Type:	Primary Antibodies
Applications:	IHC, WB
Recommended Dilution:	WB: 1:1000, IHC: 1:50~100
Reactivity:	Human, Mouse (Predicted: Rat)
Host:	Rabbit
Isotype:	Ig
Clonality:	Polyclonal
Immunogen:	This CASK antibody is generated from rabbits immunized with a KLH conjugated synthetic peptide between 564-596 amino acids from the C-terminal region of human CASK.
Formulation:	Purified polyclonal antibody supplied in PBS with 0.09% (W/V) sodium azide.
Concentration:	lot specific
Purification:	This antibody is prepared by Saturated Ammonium Sulfate (SAS) precipitation followed by dialysis against PBS.
Conjugation:	Unconjugated
Storage:	Store at -20°C as received.
Stability:	Stable for 12 months from date of receipt.
Predicted Protein Size:	105064 Da
Gene Name:	calcium/calmodulin dependent serine protein kinase
Database Link:	NP_003679 Entrez Gene 12361 Mouse Entrez Gene 29647 Rat Entrez Gene 8573 Human O14936



[View online »](#)

Background:

Protein kinases are enzymes that transfer a phosphate group from a phosphate donor, generally the γ phosphate of ATP, onto an acceptor amino acid in a substrate protein. By this basic mechanism, protein kinases mediate most of the signal transduction in eukaryotic cells, regulating cellular metabolism, transcription, cell cycle progression, cytoskeletal rearrangement and cell movement, apoptosis, and differentiation. With more than 500 gene products, the protein kinase family is one of the largest families of proteins in eukaryotes. The family has been classified in 8 major groups based on sequence comparison of their tyrosine (PTK) or serine/threonine (STK) kinase catalytic domains. The calcium/calmodulin-dependent kinase (CAMK) group consists of 75 kinases regulated by $\text{Ca}^{2+}/\text{CaM}$ and close relative family (CAMK, CAMKL, DAPK, MAPKAPK).

Synonyms:

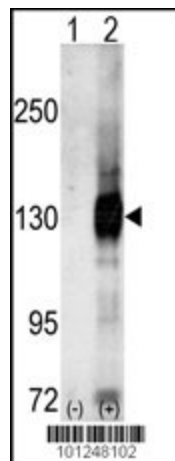
CAGH39; CAMGUK; CMG; FGS4; LIN2; MICPCH; MRXSNA; TNRC8

Protein Families:

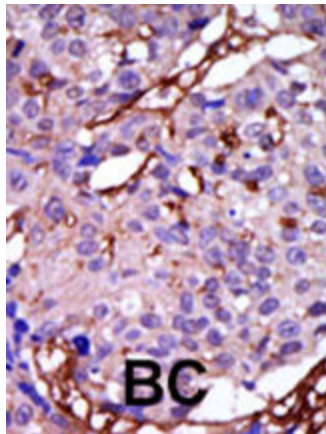
Druggable Genome, Protein Kinase

Protein Pathways:

Tight junction

Product images:

Western blot analysis of CASK (arrow) using Cask Antibody (C-term) (Cat.#[TA302217]). 293 cell lysates (2 ug/lane) either nontransfected (Lane 1) or transiently transfected with the CASK gene (Lane 2) (Origene Technologies).



Formalin-fixed and paraffin-embedded human cancer tissue reacted with the primary antibody, which was peroxidase-conjugated to the secondary antibody, followed by DAB staining. This data demonstrates the use of this antibody for immunohistochemistry; clinical relevance has not been evaluated. BC = breast carcinoma; HC = hepatocarcinoma.