

Product datasheet for **TA302211S**

MDM2 Rabbit Polyclonal Antibody

Product data:

Product Type:	Primary Antibodies
Applications:	IHC, WB
Recommended Dilution:	WB: 1:1000, IHC: 1:10~50
Reactivity:	Human, Mouse
Host:	Rabbit
Isotype:	Ig
Clonality:	Polyclonal
Immunogen:	This Mdm2 antibody is generated from rabbits immunized with a KLH conjugated synthetic peptide between 393-424 amino acids from the C-terminal region of human Mdm2.
Formulation:	Purified polyclonal antibody supplied in PBS with 0.09% (W/V) sodium azide.
Purification:	This antibody is prepared by Saturated Ammonium Sulfate (SAS) precipitation followed by dialysis against PBS.
Conjugation:	Unconjugated
Storage:	Store at -20°C as received.
Stability:	Stable for 12 months from date of receipt.
Predicted Protein Size:	55232 Da
Gene Name:	MDM2 proto-oncogene
Database Link:	NP_002383 Entrez Gene 17246 Mouse Entrez Gene 4193 Human Q00987
Background:	MDM2 is a target of the transcription factor tumor protein p53. The encoded protein is a nuclear phosphoprotein that binds and inhibits transactivation by tumor protein p53, as part of an autoregulatory negative feedback loop. Overexpression of MDM2 can result in excessive inactivation of tumor protein p53, diminishing its tumor suppressor function. This protein has E3 ubiquitin ligase activity, which targets tumor protein p53 for proteasomal degradation. This protein also affects the cell cycle, apoptosis, and tumorigenesis through interactions with other proteins, including retinoblastoma 1 and ribosomal protein L5.
Synonyms:	ACTFS; hdm2; HDMX

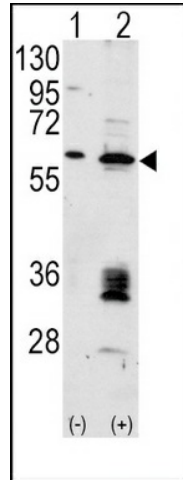


[View online »](#)

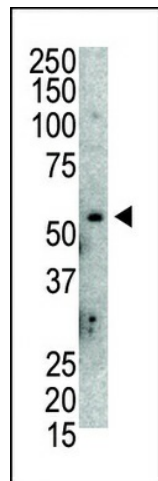
Protein Families: Druggable Genome, Transcription Factors

Protein Pathways: Bladder cancer, Cell cycle, Chronic myeloid leukemia, Endocytosis, Glioma, Melanoma, p53 signaling pathway, Pathways in cancer, Prostate cancer, Ubiquitin mediated proteolysis

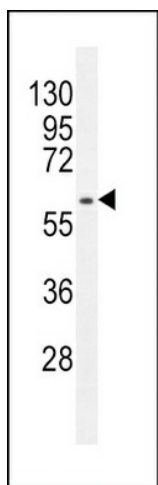
Product images:



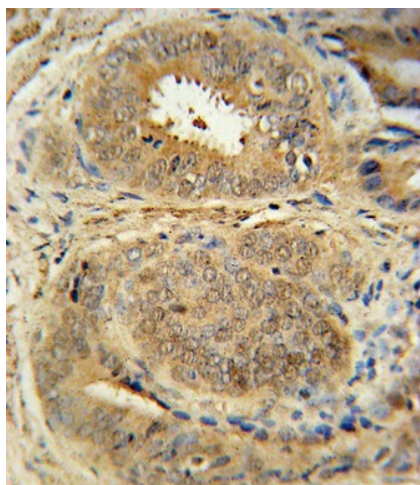
Western blot analysis of MDM2 (arrow) using rabbit polyclonal Mdm2 Antibody (C-term) (Cat.# [TA302211]). 293 cell lysates (2 ug/lane) either nontransfected (Lane 1) or transiently transfected with the MDM2 gene (Lane 2) (Origene Technologies).



Western blot analysis of anti-Mdm2 Pab (Cat. # [TA302211]) in mouse lung tissue lysate. Mdm2 (Arrow) was detected using purified Pab. Secondary HRP-anti-rabbit was used for signal visualization with chemiluminescence.



MDM2 Antibody (Q213) (Cat.#[TA302211]) western blot analysis in HepG2 cell line lysates (35ug/lane). This demonstrates the MDM2 antibody detected the MDM2 protein (arrow).



Mdm2 Antibody (C-term) (Cat.#[TA302211]) immunohistochemistry analysis in formalin fixed and paraffin embedded human prostate carcinoma followed by peroxidase conjugation of the secondary antibody and DAB staining. This data demonstrates the use of the Mdm2 Antibody (C-term) for immunohistochemistry. Clinical relevance has not been evaluated.