

## Product datasheet for **TA302210S**

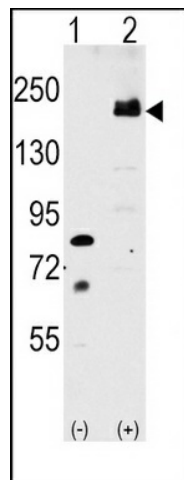
### LRP6 Rabbit Polyclonal Antibody

#### Product data:

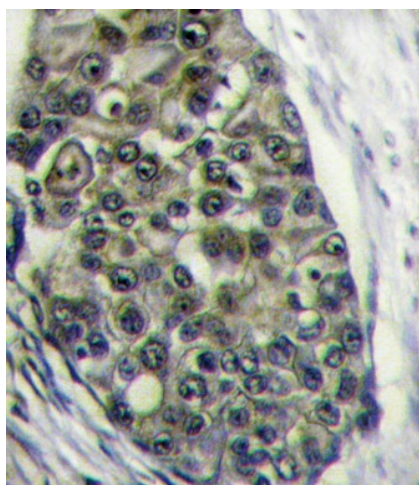
Product Type:	Primary Antibodies
Applications:	IHC, WB
Recommended Dilution:	WB: 1:1000, IHC: 1:10~50
Reactivity:	Human
Host:	Rabbit
Isotype:	Ig
Clonality:	Polyclonal
Immunogen:	This LRP6 antibody is generated from rabbits immunized with a KLH conjugated synthetic peptide between 1531-1560 amino acids from the C-terminal region of human LRP6.
Formulation:	Purified polyclonal antibody supplied in PBS with 0.09% (W/V) sodium azide.
Purification:	This antibody is prepared by Saturated Ammonium Sulfate (SAS) precipitation followed by dialysis against PBS.
Conjugation:	Unconjugated
Storage:	Store at -20°C as received.
Stability:	Stable for 12 months from date of receipt.
Predicted Protein Size:	180442 Da
Gene Name:	LDL receptor related protein 6
Database Link:	<a href="#">NP_002327</a> <a href="#">Entrez Gene 4040 Human</a> <a href="#">O75581</a>
Background:	LRP6 is essential for the Wnt/beta catenin signaling pathway, probably by acting as a coreceptor together with Frizzled for Wnt. It is a specific, high-affinity receptor for DKK1 and DKK2, but not DKK3. The interaction with DKK1 blocks LRP6-mediated Wnt/beta catenin signaling via LRP6 removal via Kremen proteins-mediated endocytosis.
Synonyms:	ADCAD2; STHAG7
Protein Families:	Druggable Genome, Transmembrane
Protein Pathways:	Wnt signaling pathway



[View online »](#)

**Product images:**

Western blot analysis of LRP6 (arrow) using rabbit polyclonal LRP6 Antibody (C-term T1546) (Cat# [TA302210]). 293 cell lysates (2 ug/lane) either nontransfected (Lane 1) or transiently transfected with the LRP6 gene (Lane 2) (Origene Technologies).



Formalin-fixed and paraffin-embedded human breast carcinoma tissue reacted with LRP6 Antibody (C-term T1546) (Cat.#[TA302210]), which was peroxidase-conjugated to the secondary antibody, followed by DAB staining. This data demonstrates the use of this antibody for immunohistochemistry; clinical relevance has not been evaluated.