

Product datasheet for **TA302199S**

S6K1 (RPS6KB1) Rabbit Polyclonal Antibody

Product data:

Product Type:	Primary Antibodies
Applications:	IHC, WB
Recommended Dilution:	WB: 1:1000, IHC: 1:50~100
Reactivity:	Human (Predicted: Mouse, Rat, Bovine, Rabbit)
Host:	Rabbit
Isotype:	Ig
Clonality:	Polyclonal
Immunogen:	This S6K (RPS6KB1) antibody is generated from rabbits immunized with a KLH conjugated synthetic peptide between 277-306 amino acids from the Central region of human S6K (RPS6KB1).
Formulation:	Purified polyclonal antibody supplied in PBS with 0.09% (W/V) sodium azide.
Concentration:	lot specific
Purification:	This antibody is prepared by Saturated Ammonium Sulfate (SAS) precipitation followed by dialysis against PBS.
Conjugation:	Unconjugated
Storage:	Store at -20°C as received.
Stability:	Stable for 12 months from date of receipt.
Predicted Protein Size:	59140 Da
Gene Name:	ribosomal protein S6 kinase B1
Database Link:	NP_003152 Entrez Gene 72508 Mouse Entrez Gene 83840 Rat Entrez Gene 6198 Human P23443
Background:	This gene encodes a member of the RSK (ribosomal S6 kinase) family of serine/threonine kinases. This kinase contains 2 non-identical kinase catalytic domains and phosphorylates several residues of the S6 ribosomal protein. The kinase activity of this protein leads to an increase in protein synthesis and cell proliferation. Amplification of the region of DNA encoding the gene for RPS6KB1 and overexpression of this kinase are seen in some breast cancer cell lines.



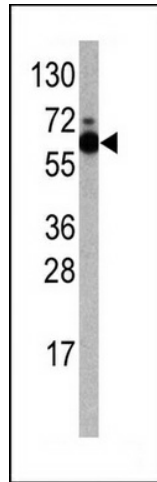
[View online »](#)

Synonyms: p70 S6KA; p70(S6K)-alpha; p70-alpha; p70-S6K; PS6K; S6K; S6K-beta-1; S6K1; STK14A

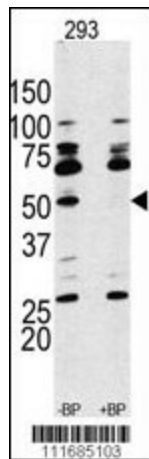
Protein Families: Druggable Genome, Protein Kinase

Protein Pathways: Acute myeloid leukemia, ErbB signaling pathway, Fc gamma R-mediated phagocytosis, Insulin signaling pathway, mTOR signaling pathway, TGF-beta signaling pathway

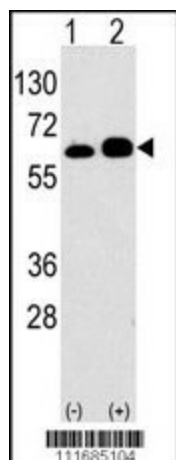
Product images:



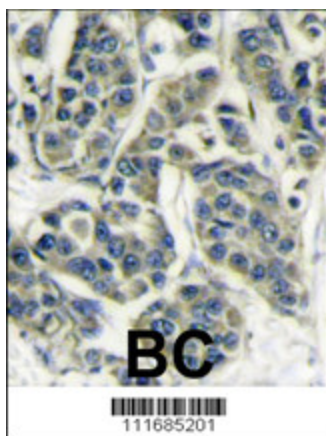
Western blot analysis of anti-RPS6KB1 Antibody (Center) Pab (Cat.#[TA302199]) in Jurkat cell line lysates (35ug/lane). RPS6KB1 Antibody (Center) (arrow) was detected using the purified Pab.



Western blot analysis of anti-RPS6KB1 Antibody (Center) Pab (Cat.#[TA302199]) pre-incubated with and without blocking peptide (BP#NULL) in 293 cell line lysate. RPS6KB1 Antibody (Center) (arrow) was detected using the purified Pab.



Western blot analysis of anti-RPS6KB1 Antibody (Center) Pab (Cat.#[TA302199]) in 293 cell line lysates transiently transfected with the RPS6KB1 gene (2ug/lane). RPS6KB1 (arrow) was detected using the purified Pab.



Formalin-fixed and paraffin-embedded human breast carcinoma reacted with RPS6KB1 Antibody (Center) (Cat.#[TA302199]), which was peroxidase-conjugated to the secondary antibody, followed by DAB staining. This data demonstrates the use of this antibody for immunohistochemistry; clinical relevance has not been evaluated.