

## Product datasheet for **TA302197S**

### **S6K1 (RPS6KB1) Rabbit Polyclonal Antibody**

#### **Product data:**

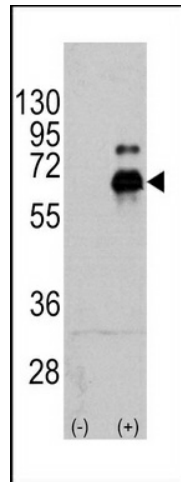
<b>Product Type:</b>	Primary Antibodies
<b>Applications:</b>	IHC, WB
<b>Recommended Dilution:</b>	WB: 1:1000, IHC: 1:10~50
<b>Reactivity:</b>	Human (Predicted: Mouse, Rat, Bovine, Rabbit)
<b>Host:</b>	Rabbit
<b>Isotype:</b>	Ig
<b>Clonality:</b>	Polyclonal
<b>Immunogen:</b>	This S6K (RPS6KB1) antibody is generated from rabbits immunized with a KLH conjugated synthetic peptide between 425-454 amino acids from human S6K (RPS6KB1).
<b>Formulation:</b>	Purified polyclonal antibody supplied in PBS with 0.09% (W/V) sodium azide.
<b>Concentration:</b>	lot specific
<b>Purification:</b>	This antibody is purified through a protein A column, followed by peptide affinity purification.
<b>Conjugation:</b>	Unconjugated
<b>Storage:</b>	Store at -20°C as received.
<b>Stability:</b>	Stable for 12 months from date of receipt.
<b>Predicted Protein Size:</b>	59140 Da
<b>Gene Name:</b>	ribosomal protein S6 kinase B1
<b>Database Link:</b>	<a href="#">NP_003152</a> <a href="#">Entrez Gene 72508 Mouse</a> <a href="#">Entrez Gene 83840 Rat</a> <a href="#">Entrez Gene 6198 Human</a> <a href="#">P23443</a>
<b>Background:</b>	RPS6KB1 is a member of the RSK (ribosomal S6 kinase) family of serine/threonine kinases. This kinase contains 2 non-identical kinase catalytic domains and phosphorylates several residues of the S6 ribosomal protein. The kinase activity of this protein leads to an increase in protein synthesis and cell proliferation. Amplification of the region of DNA encoding the gene for RPS6KB1 and overexpression of this kinase are seen in some breast cancer cell lines.
<b>Synonyms:</b>	p70 S6KA; p70(S6K)-alpha; p70-alpha; p70-S6K; PS6K; S6K; S6K-beta-1; S6K1; STK14A
<b>Protein Families:</b>	Druggable Genome, Protein Kinase



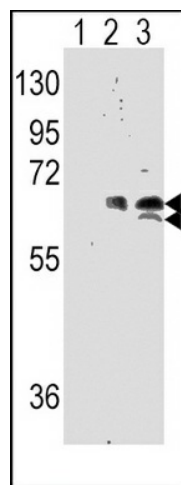
[View online »](#)

**Protein Pathways:**

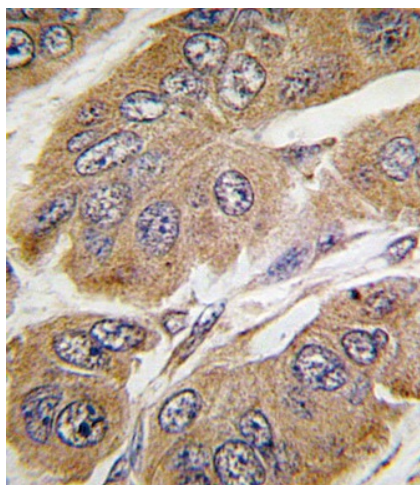
Acute myeloid leukemia, ErbB signaling pathway, Fc gamma R-mediated phagocytosis, Insulin signaling pathway, mTOR signaling pathway, TGF-beta signaling pathway

**Product images:**


Western blot analysis of RPS6KB1 (arrow) using rabbit polyclonal RPS6KB1 Antibody (S424) (RB11404). 293 cell lysates (2 ug/lane) either nontransfected (Lane 1) or transiently transfected with the RPS6KB1 gene (Lane 2) (Origene Technologies).



Western blot analysis of Phospho-RPS6KB1-pS424 Antibody (AP3352a) and RPS6KB1 Antibody (S424) ([TA302197]) in human TNF alpha activated Hela cell line lysates. RPS6KB1 and Phospho-RPS6KB1 (arrow) was detected using the purified PAb. (lane 1: without TNF alpha; lane 2: TNF alpha activated, Phospho-RPS6KB1-pS424 Antibody (AP3352a); lane 3: TNF alpha activated, RPS6KB1 Antibody (S424) ([TA302197])



Formalin-fixed and paraffin-embedded human breast carcinoma tissue reacted with RPS6KB1 Antibody (T421) (Cat.#[TA302197]), which was peroxidase-conjugated to the secondary antibody, followed by DAB staining. This data demonstrates the use of this antibody for immunohistochemistry; clinical relevance has not been evaluated.