

## Product datasheet for **TA302196**

### Cadherin 8 (CDH8) Rabbit Polyclonal Antibody

#### Product data:

Product Type:	Primary Antibodies
Applications:	IF, IHC, WB
Recommended Dilution:	WB: 1:1000, IHC: 1:10~50
Reactivity:	Human
Host:	Rabbit
Isotype:	Ig
Clonality:	Polyclonal
Immunogen:	This CDH8 antibody is generated from rabbits immunized with a KLH conjugated synthetic peptide between 33-63 amino acids from the N-terminal region of human CDH8.
Formulation:	Purified polyclonal antibody supplied in PBS with 0.09% (W/V) sodium azide.
Concentration:	lot specific
Purification:	This antibody is purified through a protein A column, followed by peptide affinity purification.
Conjugation:	Unconjugated
Storage:	Store at -20°C as received.
Stability:	Stable for 12 months from date of receipt.
Predicted Protein Size:	88253 Da
Gene Name:	cadherin 8
Database Link:	<a href="#">NP_001787</a> <a href="#">Entrez Gene 1006 Human</a> <a href="#">P55286</a>



[View online »](#)

**Background:**

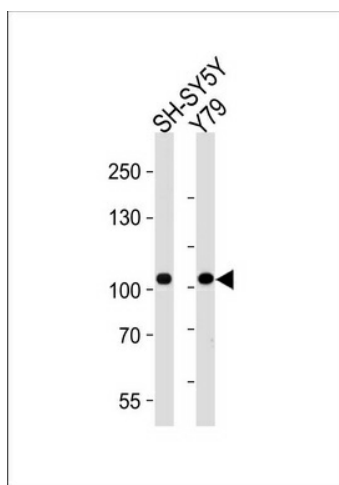
CDH8 is a type II classical cadherin from the cadherin superfamily, integral membrane proteins that mediate calcium-dependent cell-cell adhesion. Mature cadherin proteins are composed of a large N-terminal extracellular domain, a single membrane-spanning domain, and a small, highly conserved C-terminal cytoplasmic domain. The extracellular domain consists of 5 subdomains, each containing a cadherin motif, and appears to determine the specificity of the protein's homophilic cell adhesion activity. Type II (atypical) cadherins are defined based on their lack of a HAV cell adhesion recognition sequence specific to type I cadherins. This particular cadherin is expressed in brain and is putatively involved in synaptic adhesion, axon outgrowth and guidance.

**Synonyms:**

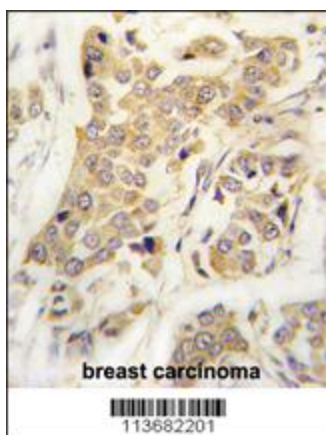
Nbla04261

**Protein Families:**

Transmembrane

**Product images:**


Western blot analysis of lysates from SH-SY5Y, Y79 cell line (from left to right), using CDH8 Antibody (N-term) (Cat. #TA302196). TA302196 was diluted at 1:1000 at each lane. A goat anti-rabbit IgG H&L (HRP) at 1:5000 dilution was used as the secondary antibody. Lysates at 35ug per lane.



Formalin-fixed and paraffin-embedded human breast carcinoma tissue reacted with CDH8 antibody (N-term) (Cat.#TA302196), which was peroxidase-conjugated to the secondary antibody, followed by DAB staining. This data demonstrates the use of this antibody for immunohistochemistry; clinical relevance has not been evaluated.

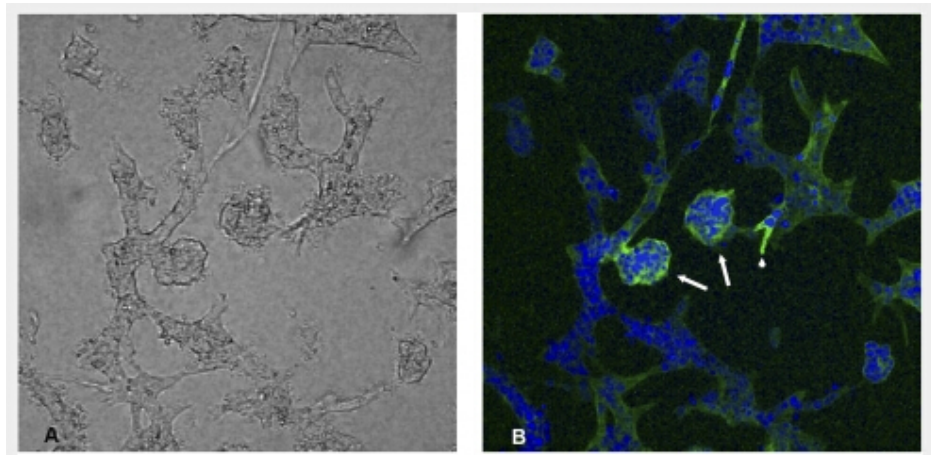


Figure from citation: Immunofluorescence of CDH8 protein level by using anti-CDH8 antibody in HK-2 cells. [View Citation](#)