

## Product datasheet for **TA302195S**

### SCF (KITLG) Rabbit Polyclonal Antibody

#### Product data:

Product Type:	Primary Antibodies
Applications:	FC, IF, WB
Recommended Dilution:	WB: 1:1000, IF: 1:10~50, FC: 1:10~50
Reactivity:	Human (Predicted: Bovine, Pig)
Host:	Rabbit
Isotype:	Ig
Clonality:	Polyclonal
Immunogen:	This SCF (KITLG) antibody is generated from rabbits immunized with a KLH conjugated synthetic peptide between 244-273 amino acids from the C-terminal region of human SCF (KITLG).
Formulation:	Purified polyclonal antibody supplied in PBS with 0.09% (W/V) sodium azide.
Concentration:	lot specific
Purification:	This antibody is prepared by Saturated Ammonium Sulfate (SAS) precipitation followed by dialysis against PBS.
Conjugation:	Unconjugated
Storage:	Store at -20°C as received.
Stability:	Stable for 12 months from date of receipt.
Predicted Protein Size:	30899 Da
Gene Name:	KIT ligand
Database Link:	<a href="#">NP_000890</a> <a href="#">Entrez Gene 4254 Human P21583</a>
Background:	KITLG is the ligand of the tyrosine-kinase receptor encoded by the KIT locus. This ligand is a pleiotropic factor that acts in utero in germ cell and neural cell development, and hematopoiesis, all believed to reflect a role in cell migration. In adults, it functions pleiotropically, while mostly noted for its continued requirement in hematopoiesis.
Synonyms:	FPH2; FPHH; Kitl; KL-1; MGF; SCF; SF; SHEP7

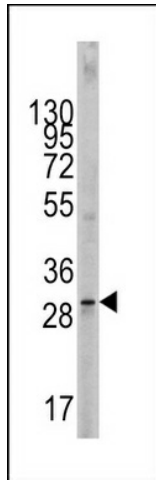


[View online »](#)

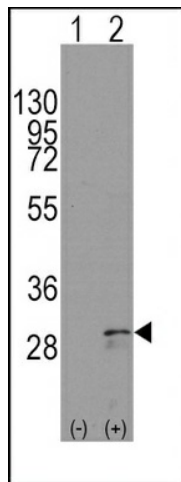
**Protein Families:** Druggable Genome, Transmembrane

**Protein Pathways:** Cytokine-cytokine receptor interaction, Hematopoietic cell lineage, Melanogenesis, Pathways in cancer

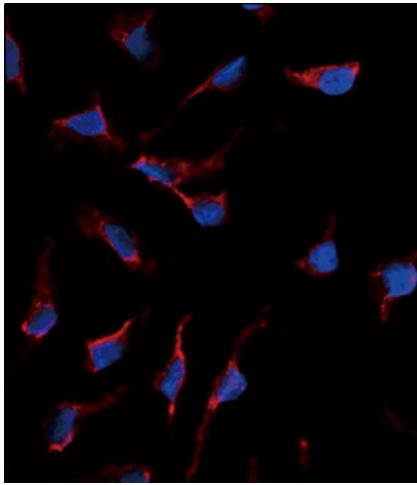
**Product images:**



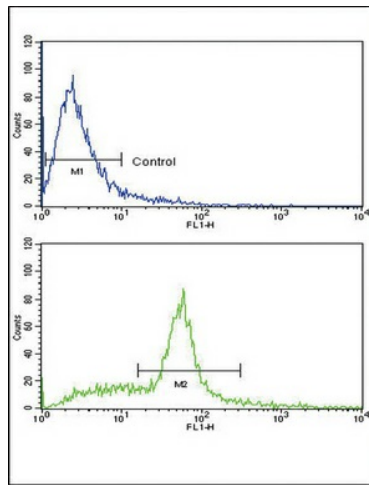
Western blot analysis of KITLG Antibody (C-term) (Cat.#[TA302195]) in 293 cell line lysates (35ug/lane). KITLG (arrow) was detected using the purified Pab.



Western blot analysis of KITLG (arrow) using rabbit polyclonal KITLG Antibody (C-term) (Cat.# [TA302195]). 293 cell lysates (2 ug/lane) either nontransfected (Lane 1) or transiently transfected with the KITLG gene (Lane 2) (Origene Technologies).



Immunofluorescence analysis of anti-KITLG Antibody (C-term) (Cat.#[TA302195]) in HeLa cells. 0.025 mg/ml primary antibody was followed by Alexa-Fluor-546-conjugated donkey anti-rabbit IgG (H+L). Alexa-Fluor-546 emits orange fluorescence. Blue counterstaining is DAPI.



Flow cytometric analysis of WiDr cells using SCF (KITLG) Antibody (C-term) (bottom histogram) compared to a negative control cell (top histogram). FITC-conjugated goat-anti-rabbit secondary antibodies were used for the analysis.