

## Product datasheet for TA302193S

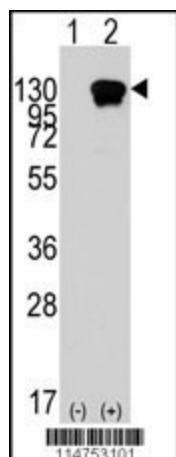
### ROR1 Rabbit Polyclonal Antibody

#### Product data:

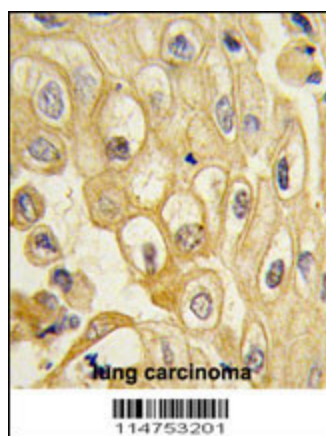
Product Type:	Primary Antibodies
Applications:	FC, IHC, WB
Recommended Dilution:	WB: 1:1000, IHC: 1:10~50, FC: 1:10~50
Reactivity:	Human
Host:	Rabbit
Isotype:	Ig
Clonality:	Polyclonal
Immunogen:	This ROR1 antibody is generated from rabbits immunized with recombinant human ROR1 protein (aa region: 112 - 399).
Formulation:	Purified polyclonal antibody supplied in PBS with 0.09% (W/V) sodium azide.
Purification:	This antibody is prepared by Saturated Ammonium Sulfate (SAS) precipitation followed by dialysis against PBS.
Conjugation:	Unconjugated
Storage:	Store at -20°C as received.
Stability:	Stable for 12 months from date of receipt.
Predicted Protein Size:	104312 Da
Gene Name:	receptor tyrosine kinase-like orphan receptor 1
Database Link:	<a href="#">NP_005003</a> <a href="#">Entrez Gene 4919 Human</a> <a href="#">Q01973</a>
Background:	ROR1 is a receptor protein tyrosine kinase whose cellular role has not been determined. It is a type I membrane protein and belongs to the ROR subfamily of cell surface receptors. Studies of a similar protein in mouse suggest that this protein may interact with another receptor protein tyrosine kinase and may be involved in skeletal and cardiac development.
Synonyms:	dj537f10.1; NTRKR1
Protein Families:	Druggable Genome, Protein Kinase, Transmembrane


[View online »](#)

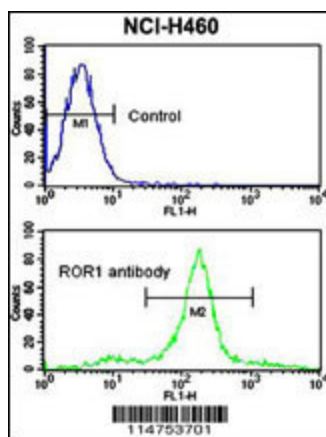
## Product images:



Western blot analysis of ROR1 (arrow) using rabbit polyclonal ROR1 Antibody (Cat.# [TA302193]).293 cell lysates (2 ug/lane) either nontransfected (Lane 1) or transiently transfected with the ROR1 gene (Lane 2) (Origene Technologies).



Formalin-fixed and paraffin-embedded human lung carcinoma tissue reacted with the ROR1 antibody (Cat.#[TA302193]), which was peroxidase-conjugated to the secondary antibody, followed by DAB staining. This data demonstrates the use of this antibody for immunohistochemistry; clinical relevance has not been evaluated.



Flow cytometric analysis of NCI-H460 cells using ROR1 antibody (bottom histogram) compared to a negative control cell (top histogram). FITC-conjugated goat-anti-rabbit secondary antibodies were used for the analysis.