

Product datasheet for **TA302191**

EHMT1/GLP (EHMT1) Rabbit Polyclonal Antibody

Product data:

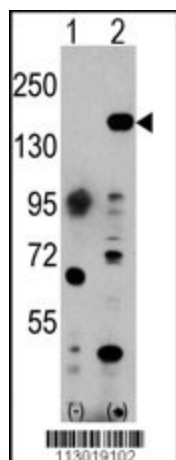
Product Type:	Primary Antibodies
Applications:	WB
Recommended Dilution:	WB: 1:1000
Reactivity:	Human (Predicted: Mouse)
Host:	Rabbit
Isotype:	Ig
Clonality:	Polyclonal
Immunogen:	This EHMT1 antibody is generated from rabbits immunized with a KLH conjugated synthetic peptide between 1145-1174 amino acids from the C-terminal region of human EHMT1.
Formulation:	Purified polyclonal antibody supplied in PBS with 0.09% (W/V) sodium azide.
Concentration:	lot specific
Purification:	This antibody is prepared by Saturated Ammonium Sulfate (SAS) precipitation followed by dialysis against PBS.
Conjugation:	Unconjugated
Storage:	Store at -20°C as received.
Stability:	Stable for 12 months from date of receipt.
Predicted Protein Size:	138254 Da
Gene Name:	euchromatic histone lysine methyltransferase 1
Database Link:	NP_079033 Entrez Gene 77683 Mouse Entrez Gene 79813 Human Q9H9B1
Background:	EHMT1, also known as EUHMTASE1, is a histone methyltransferase. This protein methylates 'Lys-9' of histone H3 in vitro. H3 'Lys-9' methylation represents a specific tag for epigenetic transcriptional repression by recruiting HP1 proteins to methylated histones. EHMT1 is Probably targeted to histone H3 by different DNA-binding proteins like E2F6, MGA, MAX and/or DP1. During G0 phase, it probably contributes to silencing of MYC- and E2F-responsive genes, suggesting a role in the G0/G1 transition of the cell cycle.
Synonyms:	bA188C12.1; Eu-HMTase1; EUHMTASE1; FP13812; GLP; GLP1; KMT1D


[View online »](#)

Protein Families: Druggable Genome

Protein Pathways: Lysine degradation

Product images:



Western blot analysis of EHMT1 (arrow) using rabbit polyclonal EHMT1 Antibody (C-term) (Cat#TA302191). 293 cell lysates (2 ug/lane) either nontransfected (Lane 1) or transiently transfected with the EHMT1 gene (Lane 2) (Origene Technologies).