

## Product datasheet for **TA302185S**

### SMYD2 Rabbit Polyclonal Antibody

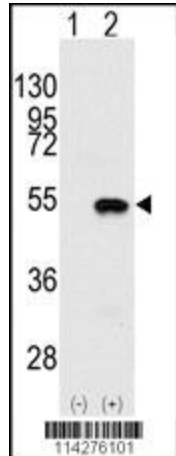
#### Product data:

Product Type:	Primary Antibodies
Applications:	WB
Recommended Dilution:	WB: 1:1000
Reactivity:	Human, Mouse (Predicted: Rat)
Host:	Rabbit
Isotype:	Ig
Clonality:	Polyclonal
Immunogen:	This SMYD2 antibody is generated from rabbits immunized with a KLH conjugated synthetic peptide between 120-152 amino acids from the N-terminal region of human SMYD2.
Formulation:	Purified polyclonal antibody supplied in PBS with 0.09% (W/V) sodium azide.
Concentration:	lot specific
Purification:	This antibody is prepared by Saturated Ammonium Sulfate (SAS) precipitation followed by dialysis against PBS.
Conjugation:	Unconjugated
Storage:	Store at -20°C as received.
Stability:	Stable for 12 months from date of receipt.
Predicted Protein Size:	49688 Da
Gene Name:	SET and MYND domain containing 2
Database Link:	<a href="#">NP_064582</a> <a href="#">Entrez Gene 226830 Mouse</a> <a href="#">Entrez Gene 289372 Rat</a> <a href="#">Entrez Gene 56950 Human</a> <a href="#">Q9NRG4</a>
Background:	SET domain-containing proteins, such as SMYD2, catalyze lysine methylation (Brown et al., 2006 [PubMed 16805913]). [supplied by OMIM]
Synonyms:	HSKM-B; KMT3C; ZMYND14
Protein Families:	Druggable Genome

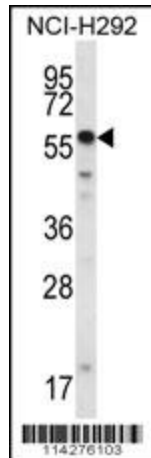


[View online »](#)

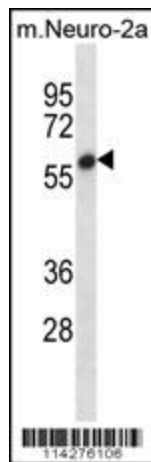
**Product images:**



Western blot analysis of SYMD2 (arrow) using rabbit polyclonal SYMD2 Antibody (N-term) (Cat.# [TA302185]).293 cell lysates (2 ug/lane) either nontransfected (Lane 1) or transiently transfected with the SYMD2 gene (Lane 2) (Origene Technologies).



SMYD2 Antibody (N-term) (Cat.#[TA302185]) western blot analysis in NCI-H292 cell line lysates (35ug/lane).This demonstrates the SMYD2 antibody detected the SMYD2 protein (arrow).



SMYD2 Antibody (N-term) (Cat.#[TA302185]) western blot analysis in mouse Neuro-2a cell line lysates (35ug/lane).This demonstrates the SMYD2 antibody detected the SMYD2 protein (arrow).